



APPENDIX B – AIRPORT INVENTORY DATA

LDA/DME RWY 25

EAGLE COUNTY RGNL (EGE)

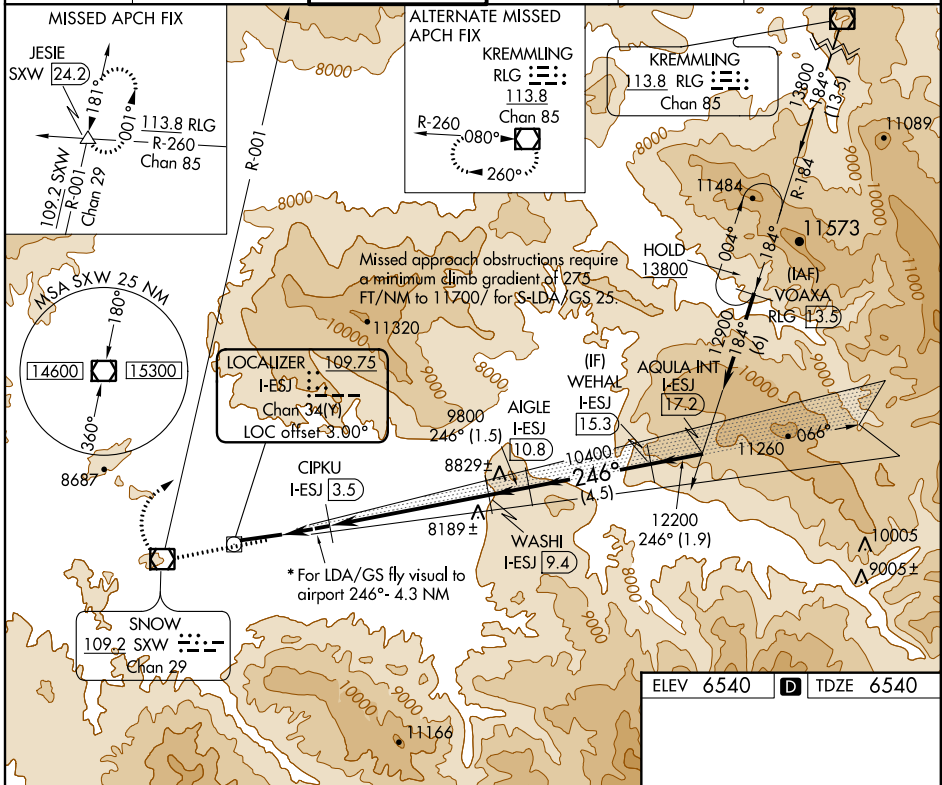
| | | |
|--|------------------------|--|
| LOC/DME I-ESJ 109.75 Chan 34 (Y) | APP CRS 246° | Rwy Idg 8000 TDZE 6540 Apt Elev 6540 |
|--|------------------------|--|

▼ Inoperative table does not apply.
▲ At night increase LDA/GS visibility to 5 miles.
 * Fly visual to airport authorized during day only.



MISSED APPROACH: Climb to 14500 direct SWX VOR/DME and climbing right turn via SWX R-001 to JESIE INT/SWX 24.2 DME and hold.

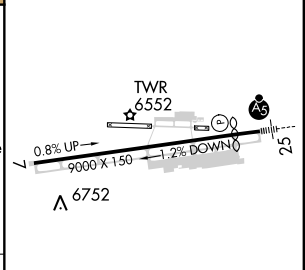
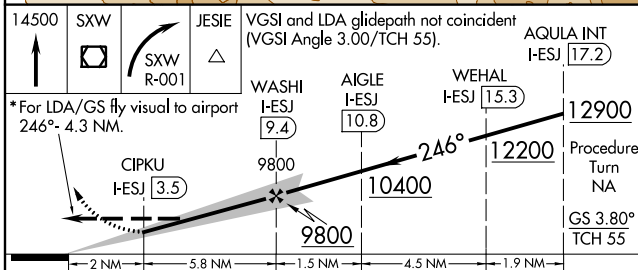
| | | | | | |
|------------------------|--------------------------------------|--------------------------------------|-------------------------|---------------------------|---|
| ATIS 135.575 | DENVER CENTER 128.65 282.2 | EAGLE TOWER * 119.8 (CTAF) | GND CON 121.8 | CLNC DEL 124.75 | DENVER CLNC DEL 124.75 (When tower closed) |
|------------------------|--------------------------------------|--------------------------------------|-------------------------|---------------------------|---|



SW-1, 09 JAN 2014 to 06 FEB 2014

SW-1, 09 JAN 2014 to 06 FEB 2014

| | |
|-----------|--------------------|
| ELEV 6540 | D TDZE 6540 |
|-----------|--------------------|



| CATEGORY | A | B | C | D |
|-------------|---------|----------------|-------------------------|----|
| S-LDA/GS 25 | 8330-3 | 1790 (1800-3) | | NA |
| S-LDA 25 | 8620-2½ | 2080 (2100-2½) | 8620-3 2080 (2100-3) | NA |

HIRL Rwy 7-25 **①**
REIL Rwy 7 **①**

| | |
|------------------------|--|
| APP CRS 247° | Rwy Idg TDZE Apt Elev N/A N/A 6535 |
|------------------------|--|

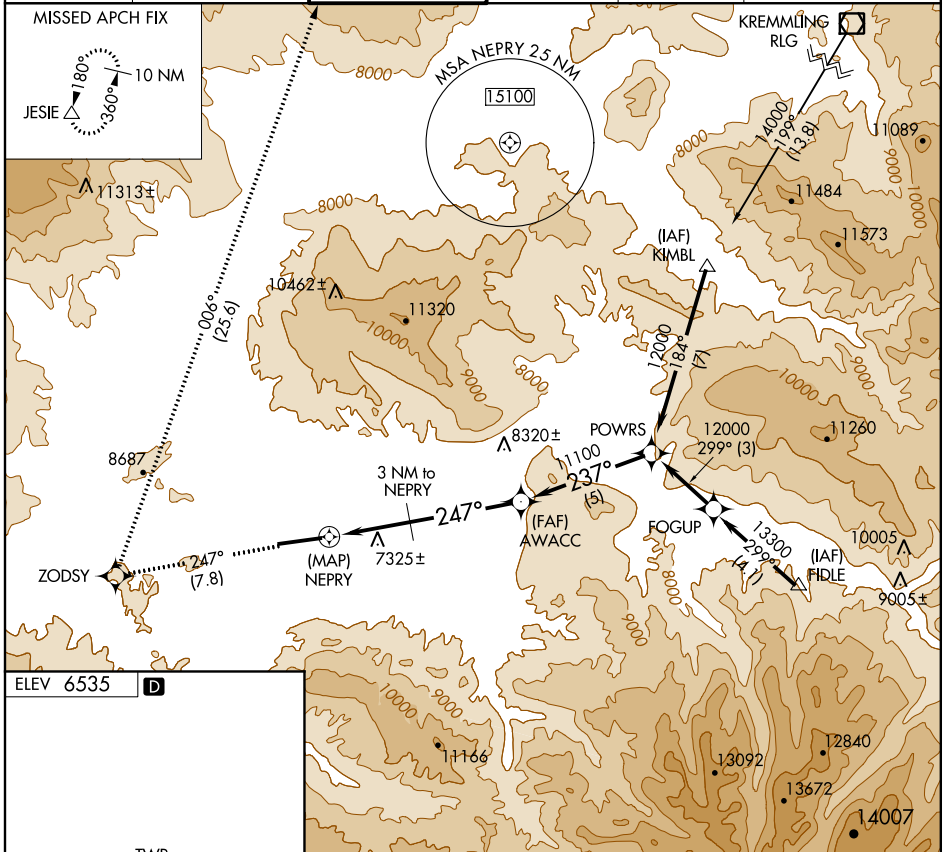
RNAV (GPS)-D

EAGLE COUNTY RGNL (EGE)

⚠ DME/DME RNP-0.3 NA. Circling south of Rwy 7-25 not authorized for Cat C and D at night. Circling to Rwy 7 NA at night. Helicopter visibility reduction below 1 SM NA.

MISSED APPROACH: Climb to 14500 via 247° course to ZODSY WP, then via 006° course to JESIE WP and hold.

| | | | | | |
|------------------------|--------------------------------------|---|-------------------------|---------------------------|---|
| ATIS 135.575 | DENVER CENTER 128.65 282.2 | EAGLE TOWER ★ 119.8 (CTAF) 0 | GND CON 121.8 | CLNC DEL 124.75 | DENVER CLNC DEL 124.75 (When tower closed) |
|------------------------|--------------------------------------|---|-------------------------|---------------------------|---|



SW-1, 09 JAN 2014 to 06 FEB 2014

SW-1, 09 JAN 2014 to 06 FEB 2014

ELEV 6535 **D**

TWR 6552

0.8% UP → 9000 X 150 → 1.2% DOWN ←

Λ 6752

HIRL Rwy 7-25 **0**

REIL Rwy 7 **0**

| | | | | |
|----------|-------|---------------------------|---------------------------|-------------------------|
| 14500 | ZODSY | 006° crs | JESIE | POWRS |
| 247° crs | ★ | △ | | |
| NEPRY | | 3 NM to NEPRY | | 12000 |
| 9860 | | 11100 | | Procedure Turn NA |
| 0.5 | | 3 NM | | 4 NM |
| CATEGORY | | A | B | C |
| CIRCLING | | 8900-1¼ 2365 (2400-1¼) | 8900-1½ 2365 (2400-1½) | 8900-3 2365 (2400-3) |

KEGE/EGE

(Special)

JEPPESEN

MISSED APCH CLIMB OF 320' /NM REQUIRED UNTIL PASSING 12000'

EAGLE, COLO

EAGLE CO REGL

2 MAY 08

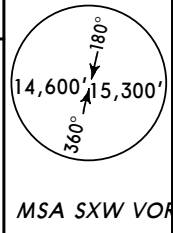
11-9 CAT A, B & C

LOC FMS Rwy 25

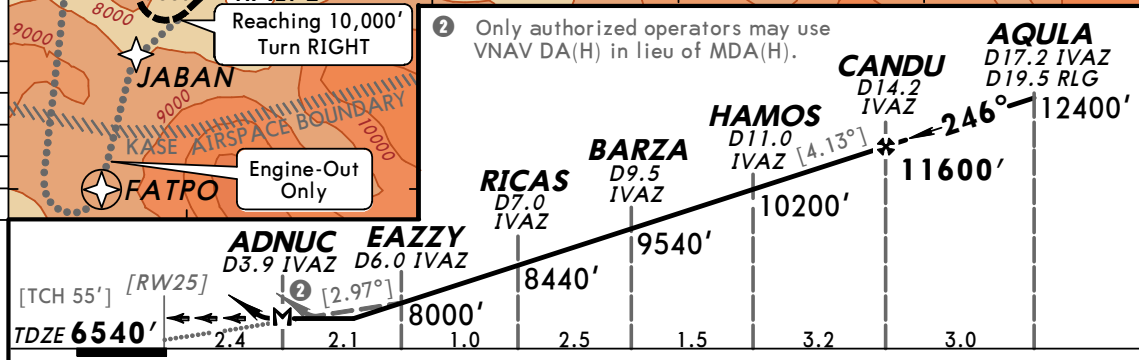
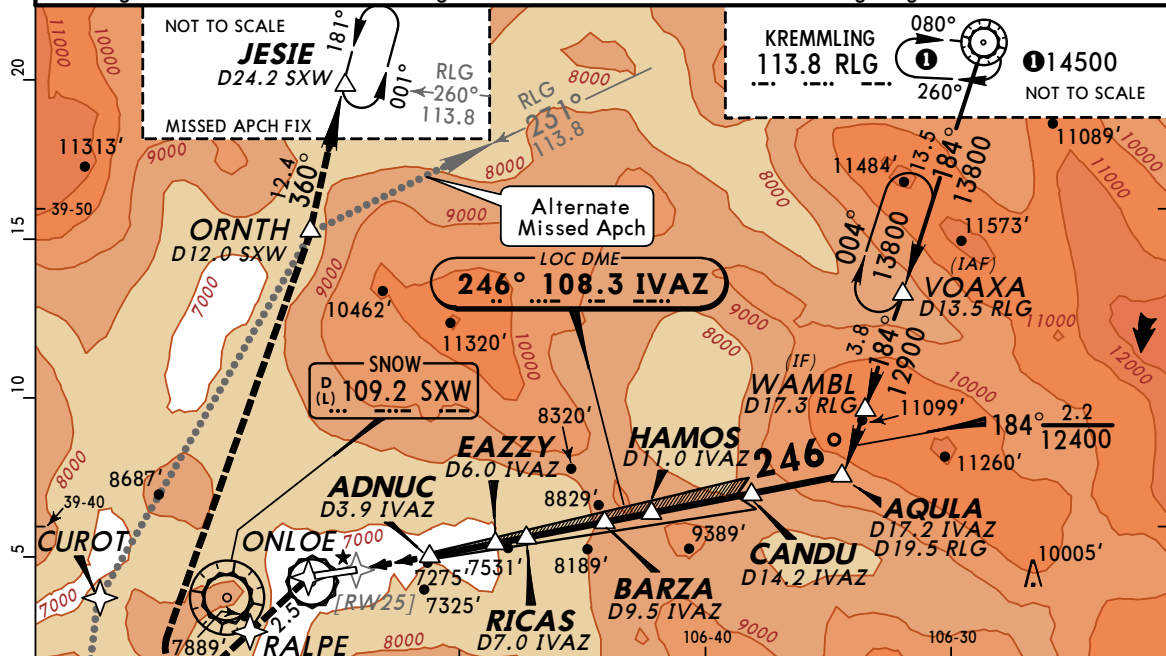
| | | | |
|--|-------------------------|----------------------------|------------------|
| *ATIS (AWOS-3 when Twr inop) 135.57 | DENVER Center 128.65 | *EAGLE Tower CTAF 119.8 | *Ground 121.8 |
|--|-------------------------|----------------------------|------------------|

| | | | | |
|-------------------|------------------------|--|------------------------|------------------------------|
| LOC IVAZ 108.3 | Final Apch Crs 246° | Minimum Alt CANDU 11600' (5060') | MDA(H) 7360' (820') | Apt Elev 6540' TDZE 6540' |
|-------------------|------------------------|--|------------------------|------------------------------|

MISSED APCH: Climb to 14,500' direct ONLOE and via 214° track to RALPE (if not at or above 10,000' at RALPE continue tracking 214° until reaching 10,000' before RIGHT turn direct ORNTH) and RIGHT turn direct ORNTH and then via 360° direct JESIE and hold, or when directed by ATC, **ALTERNATE MISSED APCH:** Climb to 14,500' direct ONLOE and via 214° track to RALPE (if not at or above 10,000' at RALPE continue tracking 214° until reaching 10,000' before RIGHT turn direct ORNTH) and RIGHT turn direct ORNTH and then via 051° track to RLG VOR and hold.



Alt Set: INCHES Trans level: FL 180 Trans alt: 18000'
1. SPECIAL AIRCRAFT AND AIRCREW AUTHORIZATION REQUIRED. 2. Two pilot operation required. 3. DME and or FMS required. 4. DUAL VHF navigation receivers required. 5. MALSR, PAPI and MIRL required for operation at night. 6. Local altimeter setting required, if not available, procedure NOT authorized. 7. Descent gradients on final approach of up to 439' /NM may be required. 8. Final approach course crosses runway centerline extended 3092' from threshold. 9. LOC/AZIMUTH offset 3.00 degrees. 10. VGSI and descent angle not coincident. 11. Pilot controlled lighting 119.8.



| | | | | | | | | | |
|--------------------------------|-----|-----|-----|-----|------|------|-------|--------|-------|
| Gnd speed-Kts | 70 | 90 | 100 | 120 | 140 | 160 | MALSR | 14500' | ONLOE |
| Desc angle CANDU-EAZZY [4.13°] | 512 | 658 | 731 | 877 | 1024 | 1170 | PAPI | | |
| Desc angle EAZZY-RW25 [2.97°] | 368 | 473 | 525 | 630 | 736 | 841 | | | |

| | | | | | | | |
|--|-------|---------|--|--|-----------------------|--|--|
| STRAIGHT-IN LANDING RWY 25 Missed Apch Climb of 320' /NM Required until Passing 12000' MDA(H) 7360' (820') | | | | CIRCLE-TO-LAND Circling not authorized at night | | | |
| RAIL out | | ALS out | | Max Kts | MDA(H) | | |
| A/B | 2 3/4 | | | 90/120 | 7740' (1200') - 2 3/4 | | |
| C | NA | | | 140 | | | |
| D | NA | | | D | NA | | |

CHANGES: Missed approach, lighting.

© JEPPESEN, 2006, 2008. ALL RIGHTS RESERVED.



INSTRUMENT APPROACH PROCEDURE CHARTS

A IFR ALTERNATE AIRPORT MINIMUMS

Standard alternate minimums for non-precision approaches are 800-2 (NDB, VOR, LOC, TACAN, LDA, VORTAC, VOR/DME, ASR or WAAS LNAV); for precision approaches 600-2 (ILS or PAR). Airports within this geographical area that require alternate minimums other than standard or alternate minimums with restrictions are listed below. NA - means alternate minimums are not authorized due to unmonitored facility or absence of weather reporting service. Civil pilots see FAR 91. IFR Alternate Airport Minimums: Ceiling and Visibility Minimums not applicable to USA/USN/USAF. Pilots must review the IFR Alternate Airport Minimums Notes for alternate airfield suitability.

NAME ALTERNATE MINIMUMS
AKRON, CO
COLORADO PLAINS
RGNL (AKO) **RNAV (GPS) Rwy 11**
NA when local weather not available.

ALAMOSA, CO
SAN LUIS VALLEY RGNL/
BERGMAN FIELD (ALS) **RNAV (GPS) Rwy 2**
RNAV (GPS) Rwy 20
NA when local weather not available.

ALBUQUERQUE, NM
ALBUQUERQUE INTL
SUNPORT (ABQ).....**VOR or TACAN Rwy 8**
Categories A,B, 900-2; Category C, 900-2½;
Category D, 900-2¾; Category E, 900-3.

ASPEN, CO
ASPEN-PITKIN CO/SARDY
FIELD (ASE)..... **RNAV (GPS)-F**
VOR/DME-C
Categories A, B, 2400-2; Category C, 2400-3.

CARLSBAD, NM
CAVERN CITY
AIR TRML (CNM) **RNAV (GPS) Rwy 3¹**
RNAV (GPS) Rwy 14R²
RNAV (GPS) Rwy 21²
¹Categories A, B, 900-2; Category C, 900-2½;
Category D, 1000-3.
²Category D, 1000-3.

NAME ALTERNATE MINIMUMS
CLAYTON, NM
CLAYTON MUNI
AIRPARK (CAO) **NDB Rwy 2¹**
NDB Rwy 20²
RNAV (GPS) Rwy 2
RNAV (GPS) Rwy 20
NA when local weather not available.
¹Categories A, B, 900-2; Category C, 900-2½,
Category D, 900-2¾.
²Category D, 800-2¼.

CLOVIS, NM
CLOVIS MUNI (CVN) **VOR Rwy 22,800-2¼**

COLORADO SPRINGS, CO
CITY OF COLORADO SPRINGS
MUNI (COS)..... **ILS or LOC Rwy 17L¹³**
ILS or LOC Rwy 35L²³
ILS or LOC Rwy 35R³
RNAV (GPS) Y Rwy 17L¹
RNAV (GPS) Y Rwy 17R³⁴
RNAV (RNP) Z Rwy 17R⁵
¹Categories A, B, 900-2; Category C, 900-2½;
Category D, 900-2¾.
²ILS, Category D, 700-2.
³NA when local weather not available.
⁴Categories A, B, 1100-2; Categories C, D,
1100-3.
⁵Categories A, B, C, D, 800-2¼.

CANON CITY, CO
FREMONT
COUNTY (1V6) **RNAV (GPS) Y Rwy 29**
NA when local weather not available.

09 JAN 2014 to 06 FEB 2014

09 JAN 2014 to 06 FEB 2014





ALTERNATE MINS

14009

M2



NAME ALTERNATE MINIMUMS

CORTEZ, CO

CORTEZ
MUNI (CEZ).....RNAV (GPS) Y Rwy 21¹
RNAV (GPS) Z Rwy 21²
VOR Rwy 21¹

¹Category D, 900-3.

²Categories A, B, 1300-2; Categories C, D,
1300-3.

CRAIG, CO

CRAIG-MOFFAT (CAG) VOR/DME Rwy 7¹
VOR Rwy 25²

¹1300-3.

²1700-3.

DEMING, NM

DEMING MUNI (DMN) RNAV (GPS) Rwy 4
RNAV (GPS) Rwy 8
RNAV (GPS) Rwy 22
RNAV (GPS) Rwy 26
VOR Rwy 26

NA when local weather not available.

DENVER, CO

CENTENNIAL (APA) ILS or LOC Rwy 35R³
RNAV (GPS) Y Rwy 35R¹
RNAV (GPS) Z Rwy 35R¹

¹Categories A, B, 900-2; Category C, 900-2½,
Category D, 900-2¾.

²Categories A, B, 1000-2; Categories C, D,
1000-3.

³ILS, LOC, Categories A, B, 1200-2; Categories
C, D, 1200-3.

FRONT RANGE

(FTG)..... ILS or LOC Rwy 26
NDB Rwy 26
RNAV (GPS) Rwy 17
RNAV (GPS) Rwy 26
RNAV (GPS) Rwy 35

NA when local weather not available.

ROCKY MOUNTAIN METROPOLITAN

(BJC)..... ILS or LOC Y Rwy 29R¹²³
ILS or LOC Z Rwy 29R²³
RNAV (GPS) Rwy 29L³
RNAV (GPS) Rwy 29R³
VOR/DME Rwy 29L/R²

¹ILS, Categories A, B, C, D, 700-2.

²NA when control tower closed.

³NA when local weather not available.

NAME ALTERNATE MINIMUMS

EAGLE, CO

EAGLE COUNTY
RGNL (EGE) LDA/DME Rwy 25¹²³
RNAV (GPS)-D⁴

¹Categories A, B, 2100-2; Category C, 2100-3.

²NA when control tower closed.

³NA when local weather not available.

⁴Categories A, B, 2400-2; Categories C, D,
2400-3.

FARMINGTON, NM

FOUR CORNERS
RGNL (FMN) ILS or LOC Rwy 25¹²
RNAV (GPS) Rwy 5³
RNAV (GPS) Rwy 7³
RNAV (GPS) Rwy 23⁴
RNAV (GPS) Rwy 25³

¹NA when control tower closed.

²ILS, Categories B, C, D, 700-2.

³NA when local weather not available.

⁴Category D, 800-2¼.

FORT COLLINS/LOVELAND, CO

FORT COLLINS-LOVELAND
MUNI (FNL)..... RNAV (GPS) Rwy 15
RNAV (GPS) Rwy 33¹
VOR/DME-A

NA when local weather not available.

¹Category D, 800-2¼.

GALLUP, NM

GALLUP MUNI (GUP)..... RNAV (GPS) Rwy 6¹²
RNAV (GPS) Rwy 24³
VOR Rwy 6⁴

¹Categories A, B, 900-2; Category C, 900-2½;
Category D, 900-3.

²NA when local weather not available.

³Category D, 900-3.

⁴Category C, 800-2¼; Category D, 900-3.

GRAND JUNCTION, CO

GRAND JUNCTION
RGNL (GJT) ILS or LOC Rwy 11¹²
LDA/DME Rwy 29³
RNAV (GPS) Y Rwy 11³

¹ILS, Category D, 700-2¼.

²NA when local weather not available.

³Category D, 800-2¼.

GREELEY, CO

GREELEY-WELD
COUNTY (GXY) ILS or LOC Rwy 34
RNAV (GPS) Rwy 16
RNAV (GPS) Rwy 27
RNAV (GPS) Rwy 34
VOR-A

NA when local weather not available.

09 JAN 2014 to 06 FEB 2014

09 JAN 2014 to 06 FEB 2014



ALTERNATE MINS

14009

M2

SW-1





ALTERNATE MINS

14009

M3



NAME ALTERNATE MINIMUMS

GUNNISON, CO

GUNNISON-CRESTED

BUTTE RGNL (GUC) **ILS or LOC Rwy 6¹**
RNAV (RNP) Rwy 6, 800-2½
VOR or GPS-A²³

¹ILS, LOC, Categories A, B, C, 1600-3.

²Categories A, B, C, 1700-3; Cat D, 2300-3.

³NA when local altimeter setting not available except for operators with approved weather reporting service.

HAYDEN, CO

YAMPA

VALLEY (HDN)..... **ILS or LOC/DME Y Rwy 10¹²**
RNAV (GPS) Y Rwy 10¹²
RNAV (RNP) Z Rwy 10¹, 800-2½
VOR/DME-B³

¹NA when local weather not available.

²Categories A, B, 1200-2; Categories C, D, 1200-3.

³Categories A, B, 1300-2; Categories C, D, 1300-3.

HOBBS, NM

LEA COUNTY

RGNL (HOB) **ILS or LOC Rwy 3¹**
LOC/DME BC Rwy 21²
RNAV (GPS) Rwy 3³
RNAV (GPS) Rwy 21²
RNAV (GPS) Rwy 30²
VOR/DME or TACAN Rwy 21²
VOR or TACAN Rwy 3²

¹NA when control tower closed.

²NA when control tower closed, except standard for operators with approved weather reporting service.

³NA when local weather not available.

LA JUNTA, CO

LA JUNTA

MUNI (LHX)..... **RNAV (GPS) Rwy 8**
RNAV (GPS) Rwy 26

NA when local weather not available.

LAMAR, CO

LAMAR MUNI (LAA)..... **RNAV (GPS) Rwy 8¹**
RNAV (GPS) Rwy 18¹
RNAV (GPS) Rwy 36²
VOR Rwy 18³

¹NA when local weather not available.

²Category D, 800-2½.

³Category C, 900-2½, Category D, 900-2½.

NAME ALTERNATE MINIMUMS

LAS VEGAS, NM

LAS VEGAS MUNI (LVS)..... **RNAV (GPS) Rwy 2**
RNAV (GPS) Rwy 20
RNAV (GPS) Rwy 32
VOR Rwy 2
VOR Rwy 20

NA when local weather not available.

LONGMONT, CO

VANCE BRAND (LMO) **RNAV (GPS) Rwy 29²**
RNAV (GPS)-B¹
VOR /DME-A¹

¹NA when local weather not available.

²Category C, 900-2½; Category D, 1500-3.

LOS ALAMOS, NM

LOS ALAMOS (LAM) **RNAV (GPS) Y Rwy 27**
RNAV (GPS) Z Rwy 27

NA when local weather not available.

Category C, 800-2½.

MEEKER, CO

MEEKER (EEO)..... **RNAV (GPS) Rwy 3**
Categories A, B, 1900-2; Category C, 1900-3.

MONTROSE, CO

MONTROSE

RGNL (MTJ)..... **ILS or LOC/DME Rwy 17**
RNAV (GPS) Rwy 13
RNAV (GPS) Rwy 35
RNAV (GPS) Y Rwy 17
RNAV (GPS) Z Rwy 17
VOR/DME Rwy 13

Category C, 1000-2½; Category D, 1000-3.

PAGOSA SPRINGS, CO

STEVENS FIELD (PSO) **RNAV (GPS)-A**
NA when local weather not available.
Category C, 1000-3.

PORTALES, NM

PORTALES MUNI (PRZ) **RNAV (GPS) Rwy 1**
Category D, 900-3.

09 JAN 2014 to 06 FEB 2014

09 JAN 2014 to 06 FEB 2014



ALTERNATE MINS

14009

M3

SW-1





ALTERNATE MINS

14009

M4



NAME ALTERNATE MINIMUMS

PUEBLO, CO
PUEBLO
 MEMORIAL (PUB).....**ILS or LOC/DME Rwy 8R**¹³
ILS or LOC/DME Rwy 26L¹²⁴
RNAV (GPS) Rwy 8R¹⁵
RNAV (GPS) Rwy 17¹⁶
RNAV (GPS) Rwy 26L¹
RNAV (GPS) Rwy 35¹⁵
VOR/DME Rwy 26L¹

- ¹NA when local weather not available.
- ²NA when control tower closed.
- ³ILS, Categories A, B, C, 700-2; Category D, 700-2¼; Category E, 900-3. LOC, Category D, 800-2¼; Category E, 900-3.
- ⁴ILS, Categories A, B, C, 700-2; Category D, 700-2¼; LOC, Category D, 800-2¼.
- ⁵Category D, 800-2¼.
- ⁶Categories A, B, 1000-2, Category C, 1000-2¾; Category D, 1000-3.

RATON, NM
 RATON MUNICIPAL/CREWS
 FIELD (RTN)**VOR/DME Rwy 2**
 Categories A, B, 1400-2; Categories C, D, 1400-3.

RIFLE, CO
 GARFIELD COUNTY
 RGNL (RIL) **LOC/DME-A**¹
ILS Rwy 26²
RNAV (GPS) Y Rwy 8³
RNAV (GPS) W Rwy 26⁴
RNAV (RNP) Y Rwy 26⁵
RNAV (RNP) Z Rwy 8⁶
RNAV (RNP) Z Rwy 26⁵
VOR/DME-C³

- ¹Categories A, B, 2300-2; Category C, 2300-3.
- ²ILS, Categories A, B, C, 1300-4.
- ³Categories A, B, 1900-2; Category C, 1900-3.
- ⁴Categories A, B, 1700-2; Category C, 1700-3.
- ⁵Categories A, B, C, 900-2½.
- ⁶Categories A, B, C, 900-3.

ROSWELL, NM
 ROSWELL INTL AIR
 CENTER (ROW) **LOC BC Rwy 3**¹
RNAV (GPS) Rwy 3²
RNAV (GPS) Rwy 17²
RNAV (GPS) Rwy 21²
RNAV (GPS) Rwy 35²

- ¹NA when control tower closed.
- ²NA when local weather not available.

NAME ALTERNATE MINIMUMS

SANTA FE, NM
 SANTA FE MUNI (SAF) **ILS or LOC Rwy 2**¹²
VOR/DME-A³⁴
VOR Rwy 33³⁴

- ¹NA when control tower closed.
- ²ILS, Category D, 700-2¼; LOC, Category D, 800-2¼.
- ³Category D, 800-2¼.
- ⁴NA when control tower closed except for operators with approved weather reporting service.

SILVER CITY, NM
 GRANT COUNTY (SVC) **VOR-A**
VOR/DME-B
 NA when Deming FSS closed.

STERLING, CO
 STERLING MUNI (STK) **RNAV (GPS) Rwy 15**
RNAV (GPS) Rwy 33
 NA when local weather not available.

TAOS, NM
 TAOS REGIONAL (SKX) **VOR/DME-B**
 Categories A, B, 1000-2; Category C, 1000-2¾;
 Category D, 1000-3.

TELLURIDE, CO
 TELLURIDE RGNL (TEX) **LOC/DME Rwy 9**¹
RNAV (GPS) Rwy 9²
VOR/DME-A³

- ¹Categories A, B, 2300-2.
- ²Categories A, B, 3600-2.
- ³Categories A, B, 3400-6.

TRINIDAD, NM
 PERRY
 STOKES (TAD) **NDB-A**
RNAV (GPS) Rwy 3
RNAV (GPS)-B

- Category D, 800-2½.
- NA when local weather not available.

TRUTH OR CONSEQUENCES, NM
 TRUTH OR CONSEQUENCES
 MUNI (TCS) **VOR-A**
 Category D, 800-2¼.

09 JAN 2014 to 06 FEB 2014

09 JAN 2014 to 06 FEB 2014



ALTERNATE MINS

14009

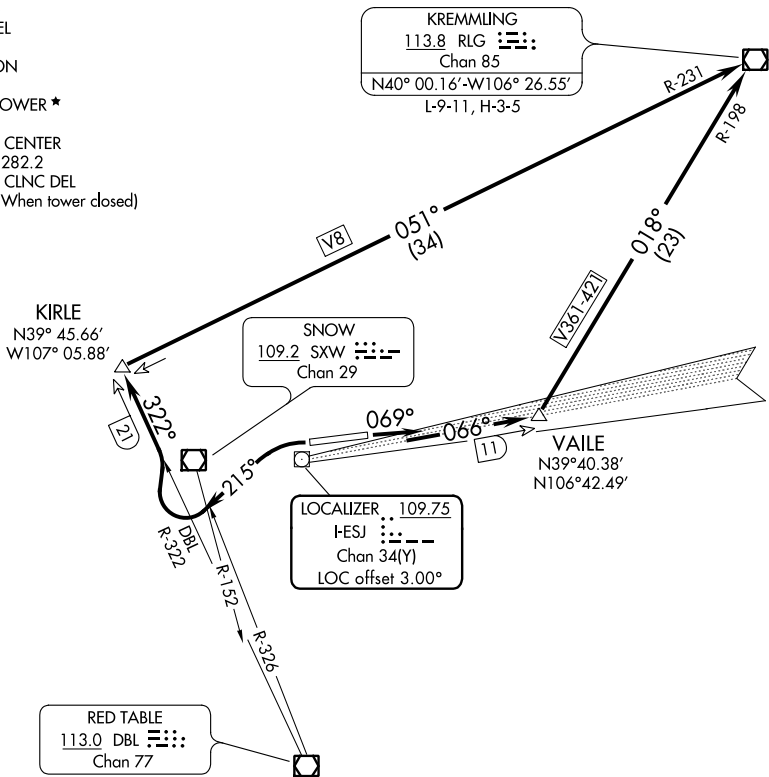
M4

SW-1



GYPSUM FIVE DEPARTURE

ATIS
135.575
CLNC DEL
124.75
GND CON
121.8
EAGLE TOWER ★
119.8
DENVER CENTER
128.65 282.2
DENVER CLNC DEL
124.75 (When tower closed)



TAKEOFF MINIMUMS

Rwy 7: Standard with minimum climb of 580' per NM to 12000.
Rwy 25: Standard with minimum climb of 815' per NM to 9200.

TAKEOFF OBSTACLE NOTES

Rwy 7: Runway lights 10' from DER, 33' right and left of centerline, 1' AGL/6549' MSL.
Vehicle on roadway 243' from DER, 28' right of centerline, 15' AGL/6562' MSL.
Tree 5041' from DER, 1689' right of centerline, up to 55' AGL/6695' MSL.
Rwy 25: Runway lights 10' from DER, 55' left and right of centerline, up to 2' AGL/6462' MSL.

NOTE: Chart not to scale.

DEPARTURE ROUTE DESCRIPTION

TAKEOFF RUNWAY 7: Climb heading 069° and I-ESJ northeast course to VAILE INT/ESJ 11 DME then left turn on RLG R-198 to RLG VOR/DME.

TAKEOFF RUNWAY 25: Climbing left turn heading 215°, until crossing SXW R-152 or DBL R-326, then turn right on DBL R-322 to KIRLE INT/DBL 21 DME then turn right on RLG R-231 to RLG VOR/DME.

SW-1, 09 JAN 2014 to 06 FEB 2014

SW-1, 09 JAN 2014 to 06 FEB 2014

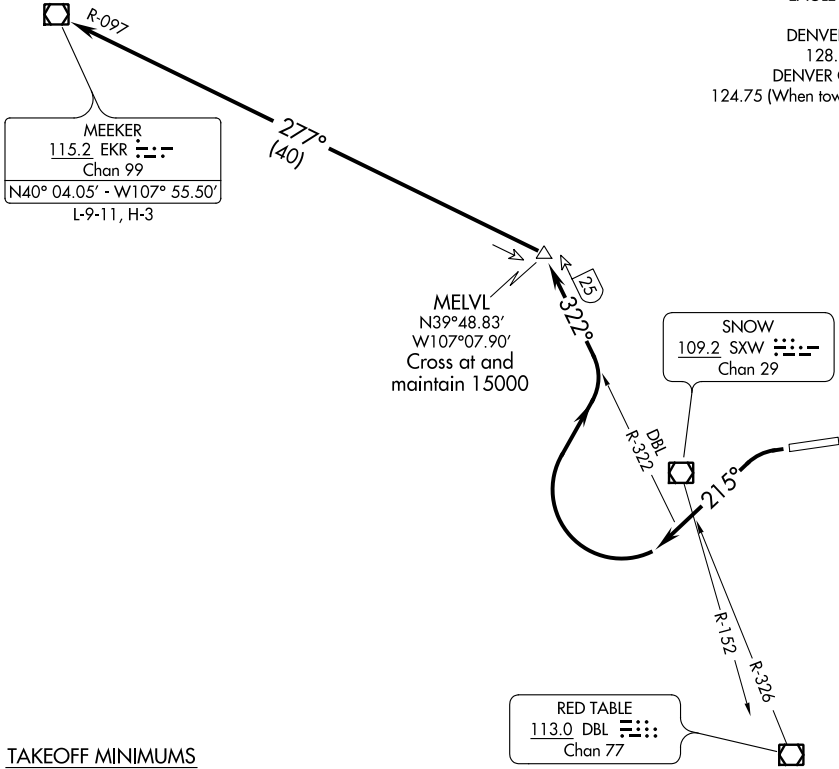
(EKR1.EKR) 12096

SL-6403 (FAA)

EAGLE COUNTY RGNL (E/G/E)
EAGLE, COLORADO

MEEKER ONE DEPARTURE

- ATIS 135.575
- CLNC DEL 124.75
- GND CON 121.8
- EAGLE TOWER * 119.8
- DENVER CENTER 128.65 282.2
- DENVER CLNC DEL 124.75 (When tower closed)



SW-1, 09 JAN 2014 to 06 FEB 2014

SW-1, 09 JAN 2014 to 06 FEB 2014

TAKEOFF MINIMUMS

Rwy 7: NA - ATC

Rwy 25: Standard with minimum climb of 815' per NM to 15000.

TAKEOFF OBSTACLE NOTES

- Rwy 25: Multiple trees beginning 1.6 NM from DER, 233' left of centerline, up to 15' AGL/7694' MSL.
- Pole 2 NM from DER, 111' left of centerline, 14' AGL/7333' MSL.
- Multiple trees beginning 1.4 NM from DER, 795' right of centerline, up to 16' AGL/7615' MSL.
- Multiple poles, tank and OL on tower beginning 1.4 NM from DER, 77' right of centerline, up to 37' AGL/7716' MSL.

NOTE: Chart not to scale.



DEPARTURE ROUTE DESCRIPTION

TAKEOFF RUNWAY 25: Climbing left turn heading 215°, upon crossing SXW R-152 or DBL R-326 turn right via DBL R-322 to MELVL INT/DBL 25 DME then turn left via EKR R-097 to EKR VOR/DME. Cross MELVL at and maintain 15000, expect filed altitude 10 minutes after departure.

MEEKER ONE DEPARTURE

(EKR1.EKR) 12096

EAGLE, COLORADO
EAGLE COUNTY RGNL (E/G/E)



TAKEOFF MINIMUMS AND (OBSTACLE) DEPARTURE PROCEDURES



13346

INSTRUMENT APPROACH PROCEDURE CHARTS



IFR TAKEOFF MINIMUMS AND (OBSTACLE) DEPARTURE PROCEDURES

Civil Airports and Selected Military Airports

ALL USERS: Airports that have Departure Procedures (DPs) designed specifically to assist pilots in avoiding obstacles during the climb to the minimum enroute altitude , and/or airports that have civil IFR takeoff minimums other than standard, are listed below. Takeoff Minimums and Departure Procedures apply to all runways unless otherwise specified. Altitudes, unless otherwise indicated, are minimum altitudes in MSL.

DPs specifically designed for obstacle avoidance are referred to as Obstacle Departure Procedures (ODPs) and are described below in text, or published separately as a graphic procedure. If the (Obstacle) DP is published as a graphic procedure, its name will be listed below, and it can be found in either this volume (civil), or the applicable military volume, as appropriate. Users will recognize graphic obstacle DPs by the term "(OBSTACLE)" included in the procedure title; e.g., TETON TWO (OBSTACLE). If not specifically assigned a departure procedure (i.e.,ODP, SID, or radar vector) as part of an IFR clearance, an ODP may be required to be flown for obstacle clearance, even though not specifically stated in the IFR clearance. When doing so in this manner, ATC should be informed when the ODP being used contains a specified route to be flown, restrictions before turning, and/or altitude restrictions.

Graphic DPs designed by ATC to standardize traffic flows, ensure aircraft separation and enhance capacity are referred to as "Standard Instrument Departures (SIDs)". SIDs also provide obstacle clearance and are published under the appropriate airport section. ATC clearance must be received prior to flying a SID.

CIVIL USERS NOTE: Title 14 Code of Federal Regulations Part 91 prescribes standard takeoff rules and establishes takeoff minimums for certain operators as follows: (1) Aircraft having two engines or less - one statute mile. (2) Aircraft having more than two engines - one-half statute mile. These standard minima apply in the absence of any different minima listed below.

MILITARY USERS NOTE: Civil (nonstandard) takeoff minima are published below. For military takeoff minima, refer to appropriate service directives.

NAME TAKEOFF MINIMUMS

NAME TAKEOFF MINIMUMS

AKRON, CO

COLORADO PLAINS RGNL (AKO)

ORIG 09127 (FAA)

NOTE: **Rwy 11**, rod on obstruction light on anemometer 314' from DER, 525' left of centerline, 26' AGL/4695' MSL. Lights on hangers 412' from DER, 301' left of centerline, 18' AGL/4687' MSL.

Rwy 29, vehicles on roadway beginning 971' from DER, 315' left of centerline, 15' AGL/4741' MSL.

Trees beginning 1651' from DER, 528' left of centerline, up to 100' AGL/4839' MSL.

ALAMOGORDO, NM

ALAMOGORDO-WHITE SANDS RGNL (ALM)

AMDT 1 02332 (FAA)

TAKEOFF MINIMUMS: **Rwys 16,21,34**, NA

DEPARTURE PROCEDURE: Use CORONA ONE Departure.

ALAMOSA, CO

SAN LUIS VALLEY RGNL-BERGMAN FIELD (ALS)

AMDT 4A 13234 (FAA)

TAKEOFF MINIMUMS: **Rwys 6, 24**, NA.

DEPARTURE PROCEDURE: **Rwy 2**, turn right. **Rwy 20**, turn left. Climb direct ALS VORTAC, continue climb in ALS VORTAC holding pattern (SE, right turns, 301° inbound) to depart ALS VORTAC at airway MEA/MCA, all others climb to 16000.

NOTE: **Rwy 2**, trees beginning 1070' to 2560' from DER, 197' to 702' left of centerline, 42' up to 72' AGL/7577' up to 7607' MSL.

09 JAN 2014 to 06 FEB 2014

09 JAN 2014 to 06 FEB 2014

13346



TAKEOFF MINIMUMS AND (OBSTACLE) DEPARTURE PROCEDURES





TAKEOFF MINIMUMS AND (OBSTACLE) DEPARTURE PROCEDURES

13346

ALBUQUERQUE, NM

ALBUQUERQUE INTL SUNPORT (ABQ)

AMDT 6 13010 (FAA)

TAKEOFF MINIMUMS: **Rwy 8**, std. w/ min. climb of 515' per NM to 7800.

DEPARTURE PROCEDURE: **Rwys 3, 30, 35**, climbing left turn direct ABQ VORTAC. If required, continue climb in ABQ VORTAC holding pattern (hold W, left turns, 077° inbound) to cross ABQ VORTAC at or above MEA/MCA for route of flight. **Rwy 8**, climbing right turn direct ABQ VORTAC. If required, continue climb in ABQ VORTAC holding pattern (hold W, left turns, 077° inbound) to cross ABQ VORTAC at or above MEA/MCA for route of flight. (do not exceed 250 kts until ABQ VORTAC). **Rwys 12, 17, 21**, climbing right turn direct ABQ VORTAC. If required, continue climb in ABQ VORTAC holding pattern (hold W, left turns, 077° inbound) to cross ABQ VORTAC at or above MEA/MCA for route of flight. **Rwy 26**, climb direct ABQ VORTAC. If required, continue climb in ABQ VORTAC holding pattern (hold W, left turns, 077° inbound) to cross ABQ VORTAC at or above MEA/MCA for route of flight.

NOTE: **Rwy 3**, tank 4961' from DER, 1708' left of centerline, 150' AGL/5466' MSL. Water tower 4984' from DER, 1713' left of centerline, 156' AGL/5468' MSL. **Rwy 12**, electrical equipment 36' from DER, 214' right of centerline, 16' AGL/5315' MSL. **Rwy 17**, light and pole beginning 104' from DER, 359' right of centerline, up to 16' AGL/5329' MSL. Pole 238' from DER, 423' left of centerline, 34' AGL/5321' MSL. **Rwy 21**, terrain beginning 159' from DER, 77' right of centerline, up to 5315' MSL. Terrain beginning 199' from DER, 100' left of centerline, up to 5311' MSL. **Rwy 26**, sign 38' from DER, 431' left of centerline, 14' AGL/5314' MSL. **Rwy 30**, sign 48' from DER, 178' right of centerline, 15' AGL/5315' MSL. Vehicle on road 229' from DER, 546' left of centerline, 19' AGL/5319' MSL. Poles and tower beginning 876' from DER, 480' right of centerline, up to 93' AGL/5393' MSL. **Rwy 35**, fence 105' from DER, 10' right of centerline, 10' AGL/5326' MSL. Vehicles beginning 136' from DER, from right to left of centerline, up to 17' AGL/5339' MSL. Signs 164' from DER, 141' left of centerline, up to 13' AGL/5328' MSL. Signs beginning 167' from DER, 86' right of centerline, up to 13' AGL/5333' MSL. Poles beginning 196' from DER, 248' left of centerline, up to 31' AGL/5345' MSL. Poles beginning 226' from DER, 203' right of centerline, up to 33' AGL/5353' MSL. Trees beginning 233' from DER, 3' right of centerline, up to 100' AGL/ 5378' MSL. Trees beginning 307' from DER, 9' left of centerline, up to 100' AGL/ 5351' MSL. Tower 3207' from DER, 858' right of centerline, 100' AGL/5410' MSL.

DOUBLE EAGLE II (AEG)

AMDT 1 08045 (FAA)

DEPARTURE PROCEDURE: **Rwy 4**, climb heading 035° to 11700 before turning right, all others turn left on course. **Rwy 17**, climb heading 169° to 9400 before turning left, all others turn right on course. **Rwy 22**, climb heading 215° to 9100 before turning left, all others turn right on course. **Rwy 35**, climb heading 349° to 11000 before turning right, all others turn left on course. NOTE: **Rwy 17**, antenna 64' from DER, 395' left of centerline, 8' AGL/ 5807' MSL. Tree 3482' from DER, 1409' right of centerline, 100' AGL/ 5919' MSL. **Rwy 35**, antenna 53' from DER, 405' right of centerline, 9' AGL/ 5808' MSL.

ANGEL FIRE, NM

ANGEL FIRE (AXX)

AMDT 1 08213 (FAA)

TAKEOFF MINIMUMS: **Rwy 35**, NA-obstacles.DEPARTURE PROCEDURE: **Rwy 17**, use ANEKE RNAV DEPARTURE.

ASPEN, CO

ASPEN-PITKIN COUNTY/SARDY FIELD (ASE)

AMDT 8 08269 (FAA)

TAKEOFF MINIMUMS: **Rwy 15**, NA-terrain.DEPARTURE PROCEDURE: **Rwy 33**, use SARDD DEPARTURE.

BELEN, NM

ALEXANDER MUNI (E80)

AMDT 1 12320 (FAA)

TAKEOFF MINIMUMS: **Rwy 3**, std. w/min. climb of 350' per NM to 12000, or 3300-3 for climb in visual conditions.**Rwy 21**, std. w/min. climb of 325' per NM to 11900, or 3300-3 for climb in visual conditionsDEPARTURE PROCEDURE: **Rwys 3, 21**, for climb in visual conditions cross Alexander Muni at or above 8400 before proceeding on course. When executing VCOA, notify ATC prior to departure.NOTE: **Rwy 3**, vehicle on road 460' from DER, left and right of centerline, 15' AGL/5189' MSL. **Rwy 21**, power poles beginning 1150' from DER, left and right of centerline, up to 34' AGL/5236' MSL.

BUCKLEY AFB (KBKF),

AURORA, CO 11013

Diverse departure not authorized. Use published departure procedures for obstacle avoidance.

BUENA VISTA, CO

CENTRAL COLORADO RGNL (AEJ)

AMDT 1 03247 (FAA)

TAKEOFF MINIMUMS: **Rwy 15**, std. with a min. climb of 400' per NM to 8200 then 340' per NM to 15500. **Rwy 33**, NA-due to terrain.DEPARTURE PROCEDURE: **Rwy 15**, use PUEBLO RNAV DEPARTURE. **Rwy 33**, NA-due to terrain.NOTE: **Rwy 15**, tree 4468' from DER, 659' right of centerline, 60' AGL/8159' MSL.

BURLINGTON, CO

KIT CARSON COUNTY (ITR)

ORIG 12264 (FAA)

NOTE: **Rwy 15**, Ground 16' from DER, 304' right of centerline, 4207' MSL.

BUTTS AAF (KFCS)

FORT CARSON, CO

. **Rwy 31**, 400-1*

* Or standard with a minimum climb of 210'/NM to 6100'.

Rwy 13 climbing left turn heading 080° within 1 mile.**Rwy 31** climbing right turn heading 80° within 1 mile.

All aircraft continue climb via hdg 080° until joining V-81.

09 JAN 2014 to 06 FEB 2014

09 JAN 2014 to 06 FEB 2014

13346



TAKEOFF MINIMUMS AND (OBSTACLE) DEPARTURE PROCEDURES





TAKEOFF MINIMUMS AND (OBSTACLE) DEPARTURE PROCEDURES



13346

CANNON AFB (KCVS),

CLOVIS, NM. (12152 USAF)

Diverse departure authorized all runways.

TAKEOFF OBSTACLES: **Rwy 4**: Terrain 4304' MSL, 56' from DER, 500' left of centerline. Terrain 4304' MSL, 110' from DER, 529' left of centerline. Terrain 4304' MSL, 267' from DER, 568' left of centerline. Terrain 4327' MSL, 1064' from DER, 772' left of centerline. Terrain 4329' MSL, 1124' from DER, 801' left of centerline. Terrain 4327' MSL, 1187' from DER, 818' left of centerline. **Rwy 13**: Terrain 4281' MSL, 276' from DER, 532' left of centerline. Terrain 4284' MSL, 173' from DER, 546' left of centerline. Terrain 4280' MSL, 16' from DER, 500' left of centerline. **Rwy 22**: Terrain 4292' MSL, 554' from DER, 648' left of centerline. Terrain 4295' MSL, 537' from DER, 640' left of centerline. **Rwy 31**: Terrain 4297' MSL, 128' from DER, 500' right of centerline. Terrain 4309' MSL, 190' from DER, 551' right of centerline. Terrain 4309' MSL, 259' from DER, 500' right of centerline. Terrain 4311' MSL, 277' from DER, 505' right of centerline. Terrain 4314' MSL, 317' from DER, 585' right of centerline.

CANON CITY, CO

FREMONT COUNTY (1V6)

AMDT 1 13038 (FAA)

TAKEOFF MINIMUMS: **Rwys 17, 35**, NA-ATC
DEPARTURE PROCEDURE: **Rwy 11**, climb on heading 110° and PUB R-270 to PUB VORTAC before proceeding on course. **Rwy 29**, climbing left turn to intercept PUB R-270 to PUB VORTAC before proceeding on course. Do not exceed 210 Knots until established on PUB R-270 eastbound.

NOTE: **Rwy 11**, trees beginning 5' from DER, 321' left of centerline, up to 10' AGL/5384' MSL. Light support structure 10' from DER, 20' left of centerline, 2' AGL/5383' MSL. Light support structure 10' from DER, 19' right of centerline, 2' AGL/5383' MSL. **Rwy 29**, vehicles on road beginning 57' from DER, 338' left of centerline, up to 15' AGL/5450' MSL. Fence 8' from DER, 432' right of centerline, 6' AGL/5450' MSL. Navaid 10' from DER, 113' right of centerline, 6' AGL/5448' MSL. Vehicles on road 349' from DER, 542' right of centerline, 15' AGL/5454' MSL. Vertical structure 119' from DER, 433' right of centerline, 10' AGL/5447' MSL.

CARLSBAD, NM

CAVERN CITY AIR TERMINAL (CNM)

ORIG 11013 (FAA)

TAKEOFF MINIMUMS: **Rwy 21**, std. w/ min. climb of 206' per NM to 4300, or 1200-3 for climb in visual conditions. **Rwy 26**, std. w/ min. climb of 241' per NM to 4500, or 1300-3 for climb in visual conditions. **Rwy 32L**, std. w/ min. climb of 208' per NM to 4100.

DEPARTURE PROCEDURE: **Rwy 21**, for climb in visual conditions, cross Cavern City Air Terminal at or above 4300 before proceeding on course. **Rwys 26, 32L**, for climb in visual conditions, cross Cavern City Air Terminal at or above 4400 before proceeding on course. **Rwy 32R**, Climb heading 341° to 4100 before turning left.

NOTE: **Rwy 3**, bushes beginning 65' from DER, 344' right of centerline, up to 6' AGL/3254' MSL. Vehicle on road 388' from DER, 514' right of centerline, 15' AGL/3260' MSL. **Rwy 8**, pole 604' from DER, 192' right of centerline, 26' AGL/3264' MSL. **Rwy 14L**, bush 110' from DER, 216' left of centerline, 4' AGL/3246' MSL. Localizer 164' from DER, 458' right of centerline, 8' AGL/3250' MSL. Vehicle on road 398' from DER, 121' left of centerline, 15' AGL/3257' MSL. Pole 398' from DER, 129' left of centerline, 20' AGL/3265' MSL. Pole 520' from DER, 27' right of centerline, 24' AGL/3269' MSL. Vehicle on road 720' from DER, 462' right of centerline, 15' AGL/3260' MSL. Pole 837' from DER, 444' right of centerline, 26' AGL/3299' MSL. **Rwy 26**, bush 107' from DER, 193' left of centerline, 6' AGL/3276' MSL. **Rwy 32R**, fence 43' from DER, 333' left of centerline, 4' AGL/3273' MSL.

CLAYTON, NM

CLAYTON MUNI AIRPARK (CAO)

AMDT 1 11125 (FAA)

TAKEOFF MINIMUMS: **Rwy 2**, std. w/min. climb of 220' per NM to 6700. **Rwy 30**, std. w/min. climb of 257' per NM to 6700.

DEPARTURE PROCEDURE: **Rwy 20**, climb heading 201° to 5500 before turning right. **Rwy 30**, climb heading 301° to 6700 before turning left.

NOTE: **Rwy 20**, vehicle on road 106' from DER, crossing left to right, up to 15' AGL/4975' MSL.

CLOVIS, NM

CLOVIS MUNI (CVN)

ORIG-A 13262 (FAA)

TAKEOFF MINIMUMS: **Rwys 8, 26**, NA-Environmental. **Rwy 4**, NA-Air traffic.

NOTE: **Rwy 12**, pole 436' from DER, 500' left of centerline, 33' AGL/4217' MSL. **Rwy 22**, vehicle on road 267' from DER, 507' left of centerline, 15' AGL/4209' MSL. Poles beginning 1323' from DER, 268' right of centerline, up to 31' AGL/4240' MSL.

09 JAN 2014 to 06 FEB 2014

09 JAN 2014 to 06 FEB 2014

13346



TAKEOFF MINIMUMS AND (OBSTACLE) DEPARTURE PROCEDURES





TAKEOFF MINIMUMS AND (OBSTACLE) DEPARTURE PROCEDURES



L4

13346

COLORADO SPRINGS, CO

CITY OF COLORADO SPRINGS MUNI (COS)

AMDT 11 13178 (FAA)

TAKEOFF MINIMUMS: **Rwy 31**, std. w/min. climb of 220' per NM to 7000. **Rwy 35L**, std. w/min. climb of 250' per NM to 7000. **Rwy 35R**, std. w/min. climb of 220' per NM to 7000.

DEPARTURE PROCEDURE: **Rwys 13, 17L, 17R**, climbing left turn direct BRK VOR/DME, thence... **Rwy 31**, climb heading 309° to 7000, then climbing right turn direct BRK VOR/DME, thence... **Rwy 35R**, climb heading 351° to 7000, then climbing right turn direct BRK VOR/DME, thence... **Rwy 35L**, climbing right turn direct BRK VOR/DME, thence...

...continue climb in holding pattern (hold NW, left turns, 154° inbound) to cross BRK VOR/DME at or above MEA/MCA for route of flight.

NOTE: **Rwy 13**, rising terrain beginning 126' from DER, left and right of centerline, up to 6161' MSL. **Rwy 35L**, tree 811' from DER, 480' right of centerline, 20' AGL/6199' MSL. Tree 4865' from DER, 663' right of centerline, 31' AGL/6310' MSL. Tree 5916' from DER, 1760' right of centerline, 38' AGL/6337' MSL.

CORTEZ, CO

CORTEZ MUNI (CEZ)

AMDT 3 10098 (FAA)

DEPARTURE PROCEDURE: use LEDVE DEPARTURE.

CRAIG, CO

CRAIG-MOFFAT (CAG)

AMDT 4 12096 (FAA)

TAKEOFF MINIMUMS: **Rwy 7**, std. w/min. climb of 510' per NM to 7200, or 2400-3 for climb in visual conditions.

Rwy 25, std. w/min. climb of 350' per NM to 8200, or 2400-3 for climb in visual conditions.

DEPARTURE PROCEDURE: **Rwy 7**, climb direct to CHE VOR/DME, or for climb in visual conditions, cross Craig-Moffat Airport at or above 8500 then proceed on CHE R-247 to CHE VOR/DME, thence **Rwy 25**, climbing right turn to intercept CHE VOR/DME radial 265 to CHE VOR/DME, or for climb in visual conditions, Cross Craig-Moffat Airport at or above 8500 then proceed on CHE R-247 to CHE VOR/DME, thence

.... Aircraft departing CHE VOR/DME on radials 214° CW 296° climb on course. All other aircraft climb in holding pattern (hold NW, right turns, 108° inbound) to cross CHE VOR/DME at or above; radials 297° CW 076° 11500, radials 077° CW 114° 10200, radials 115° CW 213° 11600. When executing VCOA, notify ATC prior to departure.

NOTE: **Rwy 7**, vertical structure 108' from DER, 288' left of centerline, 18' AGL/6202' MSL. Multiple trees beginning 450' from DER, 211' left and right of centerline, up to 100' AGL/6276' MSL. Vehicles on road 104' from DER, 513' right to left of centerline, up to 15' AGL/6214' MSL. **Rwy 25**, vehicles on multiple roads beginning 5' from DER, 118' left and right of centerline, up to 15' AGL/6333' MSL. Fence 14' from DER, 499' right of centerline, 5' AGL/6190' MSL. Navigation aid 39' from DER, 93' right of centerline, 4' AGL/6189' MSL. Tree 362' from DER, 435' right of centerline, 100' AGL/6203' MSL. Multiple trees beginning 1457' from DER, 450' left of centerline, up to 100' AGL/6338' MSL. Multiple poles 796' from DER, 625' left of centerline, up to 40' AGL/6285' MSL. Terrain beginning 1941' from DER, 927' left of centerline, up to 6337' MSL. Multiple buildings beginning 5509' from DER, 552' left of centerline, up to 15' AGL/6338' MSL.

DEMING, NM

DEMING MUNI (DMN)

AMDT 2A 11013 (FAA)

TAKEOFF MINIMUMS: **Rwy 4, NA**.

DEPARTURE PROCEDURE: WESTBOUND: **Rwy 8**, climbing left turn heading 214°; **Rwy 22**, climbing right turn heading 302°; **Rwy 26**, climbing right turn heading 275°; intercept DMN VORTAC R-258 then via V94 on course. EASTBOUND: **Rwy 8**, climb direct DMN VORTAC; **Rwys 22, 26**, climbing right turn direct DMN VORTAC; then via V94 on course. NORTHBOUND: **Rwy 8**, climb direct DMN VORTAC; **Rwys 22, 26**, climbing right turn direct DMN VORTAC; then via V110 on course.

NOTE: **Rwy 22**, multiple trees and pole beginning 991' from DER, 139' right of centerline, up to 100' AGL/4380' MSL.

Rwy 26, multiple trees beginning 35' from DER, 88' right of centerline, up to 100' AGL/4365' MSL. Multiple trees beginning 5' from DER, 37' left of centerline, up to 100' AGL/4355' MSL.

DENVER, CO

CENTENNIAL (APA)

AMDT 5 12320 (FAA)

TAKEOFF MINIMUMS: **Rwy 17L**, std. w/min. climb of 255' per NM to 6800. **Rwy 17R**, std. w/min. climb of 370' per NM to 6800.

DEPARTURE PROCEDURE: **Rwy 10**, when departing on courses between 162° CCW to 333° from DER climb heading 103° to 6600 before turning right. All other courses: climbing left turn to intercept DEN VOR/DME R-194 to DEN VOR/DME, thence ...

Rwys 17L/R, climb on heading between 350° CW to 162° from DER. All other courses: climbing left turn to intercept DEN VOR/DME R-199 to DEN VOR/DME, thence

Rwy 28, climb on heading between 333° CW to 103° from DER. All other courses: climbing right turn to intercept DEN VOR/DME R-210 to DEN VOR/DME, thence

Rwys 35L/R, climb on a heading between 333° CW 162° from DER. All other courses: climb heading 350° to intercept DEN VOR/DME R-211 to DEN VOR/DME, thence

.... Climb in DEN VOR/DME holding pattern (hold South, right turns, 343° inbound) to 16500 before proceeding on course.

NOTE: **Rwy 10**, terrain beginning 369' from DER 30' right of centerline, up to 5854' MSL. Fences beginning 1211' from DER, 233' right of centerline, up to 8' AGL/5841' MSL.

Multiple bushes beginning 1378' from DER, 284' right of centerline, up to 6' AGL/5840' MSL. Multiple roads with vehicles beginning 198' from DER, 404' left of centerline, up to 15' AGL/5835' MSL. Terrain 1358' from DER, 253' left of centerline, up to 5830' MSL. **Rwy 17L**, multiple trees beginning 2968' from DER, 761' right of centerline, up to 100' AGL/5976' MSL. **Rwy 17R**, terrain 181' from DER 496' right of centerline, 5887' MSL. Fence 538' from DER, 196' right of centerline, 8' AGL/5886' MSL. Multiple trees beginning 562' from DER, 61' right of centerline, up to 16' AGL/5976' MSL. Multiple light poles beginning 2362' from DER, 256' right of centerline, up to 30' AGL/5942' MSL. Obstruction light on building 3282' from DER, 842' right of centerline, 90' AGL/6021' MSL. **Rwy 28**, terrain beginning 89' from DER, on centerline extending to 514' left to 137' right of centerline, up to 5843' MSL. Windsock 100' from DER, 183' left of centerline, 15' AGL/5832' MSL. Multiple trees beginning 1640' from DER, 731' left of centerline, up to 100' AGL/5959' MSL.

09 JAN 2014 to 06 FEB 2014

09 JAN 2014 to 06 FEB 2014

13346



TAKEOFF MINIMUMS AND (OBSTACLE) DEPARTURE PROCEDURES



L4

SW-1

**DENVER, CO (CON'T)**

DENVER INTL (DEN)

AMDT 3 12320 (FAA)

DEPARTURE PROCEDURE: **Rwy 7**, climb on a heading between 315° CW to 218° from DER. All other courses: climbing right turn, thence ...

Rwy 8, climb on a heading between 310° CW to 220° from DER. All other courses: climbing right turn, thence ...

Rwys 16L, 16R, climb on a heading between 213° CCW to 353° from DER. All other courses: climbing left turn, thence...

Rwys 17L, 17R, climb on a heading between 222° CCW to 353° from DER. All other courses: climbing right turn, thence ...

Rwy 25, climb on a heading between 317° CW to 083° or 206° CCW to 083° from DER. All other courses: climbing left turn, thence ...

Rwy 26, climb on a heading between 313° CW to 083° or 219° CCW to 083° from DER. All other courses: climbing left turn, thence ...

Rwys 34L, 34R, climb on a heading between 313° CW to 172° from DER. All other courses: climbing right turn, thence ...

Rwys 35L, 35R, climb on a heading between 313° CW to 172° from DER. All other courses: climbing right turn, thence ...

... direct DEN VOR/DME, climb in DEN VOR/DME holding pattern (hold South, right turns, 343° inbound) to 16500 before proceeding on course.

NOTE: **Rwy 7**, sign 21' from DER, 337' left of centerline, 5' AGL/5357' MSL. **Rwy 16L**, multiple signs beginning 126' from DER, 490' left of centerline, up to 7' AGL/5359' MSL. Communication tower 4749' from DER, 1358' left of centerline, 107' AGL/5478' MSL. **Rwy 25**, sign 48' from DER, 450' right of centerline, 6' AGL/5354' MSL. **Rwy 26**, sign 50' from DER, 339' left of centerline, 5' AGL/5356' MSL.

FRONT RANGE (FTG)

AMDT 3 12320 (FAA)

DEPARTURE PROCEDURE: **Rwy 8**, climb on a heading between 312° CW to 228° from DER. All other courses: climbing left turn direct DEN VOR/DME. Continue climb in DEN VOR/DME holding pattern (hold South, right turns, 343° inbound) to 16500 before proceeding on course.

Rwy 17, climb on a heading between 352° CW to 229° from DER. All other courses: climbing right turn direct DEN VOR/DME. Continue climb in DEN VOR/DME holding pattern (hold South, right turns, 343° inbound) to 16500 before proceeding on course. **Rwy 26**, climb on a heading between 315° CW to 083° or between 226° CCW to 083° from DER. All other courses: climbing right turn direct DEN VOR/DME. Continue climb in DEN VOR/DME holding pattern (hold South, right turns, 343° inbound) to 16500 before proceeding on course. **Rwy 35**, climb on a heading between 313° CW to 172° from DER. All other courses: climbing left turn direct DEN VOR/DME. Continue climb in DEN VOR/DME holding pattern (hold South, right turns, 343° inbound) to 16500 before proceeding on course.

NOTE: **Rwy 17**, pole 3618' from DER, 516' left of centerline, 43' AGL/5603' MSL. **Rwy 26**, trees beginning 98' from DER, 456' right of centerline, up to 50' AGL/5489' MSL.

DENVER, CO (CON'T)

ROCKY MOUNTAIN METROPOLITAN (BJC)

AMDT 5 12320 (FAA)

TAKEOFF MINIMUMS: **Rwy 29L**, 300-1 or std. w/ min. climb of 405' per NM to 5900.

DEPARTURE PROCEDURE: **Rwy 2**, climb on a heading between 350° CW to 160° from DER. All other courses: climbing right turn heading 147° to intercept DEN VOR/DME R-285 to DEN VOR/DME, thence ...

Rwys 11L, 11R, climb on heading between 160° CCW to 350° from DER. All other courses: climb heading 113° to intercept DEN VOR/DME R-275 to DEN VOR/DME, thence ...

Rwy 20, climb on heading between 160° CCW to 024° from DER. All other courses: climbing left turn heading 044° to intercept DEN VOR/DME R-272 to DEN VOR/DME, thence ...

Rwy 29R, climb on heading between 350° CW to 113° from DER. All other courses: climbing right turn heading 142° to intercept DEN VOR/DME R-280 to DEN VOR/DME, thence ...

Rwy 29L, climb on heading between 350° CW to 113° from DER. All other courses: Climbing right turn heading 142° to intercept DEN VOR/DME R-279 to DEN VOR/DME, thence ...

... climb in DEN VOR/DME holding pattern (hold South, right turns, 343° inbound) to 16500 before proceeding on course.

NOTE: **Rwy 2**, pole 432' from DER, 370' right of centerline, 49' AGL/5619' MSL. **Rwy 29L**, terrain beginning 23' from DER 28' left of centerline, up to 5708' MSL. Fence 982' from DER 303' left of centerline, 14' AGL/5714' MSL. Fence 1015' from DER 392' left of centerline, 15' AGL/5725' MSL. Multiple trees beginning 687' from DER 615' right of centerline up to 70' AGL/5839' MSL. Tree 3196' from DER 1337' left of centerline, 70' AGL/5839' MSL.

DURANGO, CO

DURANGO-LA PLATA COUNTY (DRO)

AMDT 6A 09015 (FAA)

TAKEOFF MINIMUMS: **Rwy 3**, std. w/ a min. climb of 215' per NM to 7600, or 1700-3 for climb in visual conditions.

DEPARTURE PROCEDURE: **Rwy 3**, climbing right turn to 9000 heading 160° and DRO VOR/DME R-125 to RESER INT, or for climb in visual conditions: Cross Durango-La Plata County Airport Southeast bound at or above 8200 MSL, then proceed on DRO VOR/DME R-125 to RESER INT. **Rwy 21**, climbing right turn to 9500 heading 280° and DRO VOR/DME R-235 to MARKE INT.

NOTE: **Rwy 3**, trees beginning 1223' from DER, 794' left of centerline, up to 42' AGL/6741' MSL. Trees beginning 488' from DER, 431' right of centerline, up to 42' AGL/6698' MSL, vehicles on road beginning 8' from DER, right and left of centerline, up to 15' AGL/6706' MSL.





TAKEOFF MINIMUMS AND (OBSTACLE) DEPARTURE PROCEDURES



13346

EAGLE, CO

EAGLE COUNTY RGNL (EGE)

AMDT 8 13346 (FAA)

TAKEOFF MINIMUMS: **Rwys 7, 25**, 4200-3 for climb in visual conditions.

DEPARTURE PROCEDURE: For climb in visual conditions cross Eagle County RGNL airport northeast bound at or above 10600 MSL then proceed on RLG R -212 to RLG VOR/DME. When executing VCOA, notify ATC prior to departure.

NOTE: **Rwy 7**, runway lights 10' from DER, 33' right and left of centerline, 1' AGL/6549' MSL. Vehicle on roadway 243' from DER, 28' right of centerline, 15' AGL/6562' MSL. Tree 5041' from DER, 1689' right of centerline, up to 55' AGL/6695' MSL. **Rwy 25**, runway lights 10' from DER, 55' right and left of centerline, up to 2' AGL/6462' MSL.**FORT MORGAN, CO**

FORT MORGAN MUNI (FMM)

ORIG 12320 (FAA)

TAKEOFF MINIMUMS: **Rwys 17, 35**, NA-Environmental. NOTE: **Rwy 14**, vehicle on road 549' from DER, 284' right of centerline, up to 17' AGL/4516' MSL. Vehicle on road 130' from DER, 264' left of centerline, up to 14' AGL/4523' MSL. Trees 977' from DER, 550' left of centerline, 15' AGL/4634' MSL. Building 761' from DER, 238' left of centerline, 16' AGL/4525' MSL. **Rwy 32**, trees 1215' from DER, 480' right of centerline, 15' AGL/4614' MSL.**GALLUP, NM**

GALLUP MUNI (GUP)

AMDT 2 94230 (FAA)

TAKEOFF MINIMUMS: **Rwy 6**, CAT A,B 1300-2 or std. with a min. climb of 300' per NM until passing 8000. CAT C,D 1600-3 or std. with a min. climb of 320' per NM until passing 8500. **Rwy 24**, 700-2 or std. with a min. climb of 370' per NM until passing 8000. DEPARTURE PROCEDURE: **Rwy 6**, turn left. All aircraft climb direct GUP VORTAC. Departures via GUP R-190 CW R-242 climb on course. Departures via GUP R-243 CW R-189 climb in GUP holding pattern (SW, right turns, 047° inbound) to cross GUP at or above 9000.**GRAND JUNCTION, CO**

GRAND JUNCTION RGNL (GJT)

AMDT 11 08269 (FAA)

TAKEOFF MINIMUMS: **Rwy 4**, NA-obstacles. **Rwy 22**, NA-obstacles, facility reception (JNC VOR/DME). DEPARTURE PROCEDURE: **Rwys 11, 29**, use MONUMENT DEPARTURE.**GRANTS, NM**

GRANTS-MILAN MUNI (GNT)

ORIG 97254 (FAA)

TAKEOFF MINIMUMS: **Rwy 13**, 2400-2 or std. with a min. climb of 420' per NM to 11000. **Rwy 31**, NA. DEPARTURE PROCEDURE: **Rwy 13**, climb runway heading to join V12 at or above 11000 before proceeding on course.**GREELEY, CO**

GREELEY-WELD COUNTY (GXY)

AMDT 3 08241 (FAA)

DEPARTURE PROCEDURE: **Rwy 9**, climb on a heading between 289° CW to 211° from DER. All other courses: climbing left turn, thence...**Rwy 16**, climb on a heading between 209° CCW to 347° from DER. All other courses: climbing left turn, thence...**Rwy 27**, climb on a heading between 291° CW to 094° or 206° CCW to 094° from DER. All other courses: climbing right turn, thence...**Rwy 34**, climb on a heading between 290° CW to 166° from DER. All other courses: climbing right turn, thence...direct GLL VOR/DME, climb in GLL VOR/DME holding pattern (hold NE, right turns, 205° inbound) to 16500 before proceeding on course.NOTE: **Rwy 27**, tree 1634' from DER, 836' left of centerline, 56' AGL/4717' MSL, fence 237' from DER, 422' right of centerline, 9' AGL/4670' MSL, fence 99' from DER, 423' left of centerline, 4' AGL/4665' MSL. **Rwy 34**, multiple trees beginning 1860' from DER, 595' right of centerline, up to 67' AGL/4785' MSL, tree 2854' from DER, 524' left of centerline, 73' AGL/4770' MSL.**ERIE, CO**

ERIE MUNI (EIK)

AMDT 2A 10294 (FAA)

TAKEOFF MINIMUMS: **Rwy 15**, 500-2 or std. with a min. climb gradient of 270' per NM to 5700.DEPARTURE PROCEDURE: **Rwy 15**, turn right; **Rwy 33**, turn left; climb direct BJC VOR/DME. Departures on BJC R-340 CW R-150 climb on course. All others climb in BJC holding pattern (NE, left turns 203° inbound) to cross BJC VOR/DME at or above 13300, or comply with RADAR vectors.**FARMINGTON, NM**

FOUR CORNERS RGNL (FMN)

AMDT 1 10210 (FAA)

DEPARTURE PROCEDURE: **Rwys 5, 23, 25**, climbing right turn direct RSK VORTAC. Continue climb in RSK VORTAC holding pattern (hold East, left turn, 252° inbound) to cross RSK VORTAC at or above MEA for route of flight. **Rwy 7**, climb direct RSK VORTAC. Continue climb in RSK VORTAC holding pattern (hold East, left turn, 252° inbound) to cross RSK VORTAC at or above MEA for route of flight.NOTE: **Rwy 5**, sign 27' from DER, 464' right of centerline, 13' AGL/5513' MSL. Building 4005' from DER, 654' right of centerline, 96' AGL/5608' MSL. **Rwy 25**, sign 37' from DER, 218' left of centerline, 10' AGL/5479' MSL. Obstruction light on DME 200' from DER, 442' left of centerline, 24' AGL/5493' MSL. Sign 37' from DER, 218' left of centerline, 10' AGL/5479' MSL.**FORT COLLINS, CO**

FORT COLLINS-LOVELAND MUNI (FNL)

AMDT 5 08213 (FAA)

TAKEOFF MINIMUMS: **Rwys 6,24**, NA-VFR runway.DEPARTURE PROCEDURE: **Rwy 15**, climb on heading between 117° CCW to 329° from DER. All other courses: climbing left turn heading 017° to intercept GLL VOR/DME R-242 to GLL VOR/DME, thence...**Rwy 33**, climb on heading between 323° CW to 148° from DER. All other courses: climbing right turn heading 122° to intercept GLL VOR/DME R-257 to GLL VOR/DME, thence...climb in GLL VOR/DME holding pattern (hold NE, right turns, 205° inbound) to 16500 before proceeding on course.NOTE: **Rwy 33**, multiple trees beginning 833' from DER, 516' right of centerline, up to 66' AGL/5025' MSL. Multiple poles beginning 567' from DER, 540' left of centerline, up to 26' AGL/4995' MSL.

13346



TAKEOFF MINIMUMS AND (OBSTACLE) DEPARTURE PROCEDURES





TAKEOFF MINIMUMS AND (OBSTACLE) DEPARTURE PROCEDURES



13346

GUNNISON, CO

GUNNISON-CRESTED BUTTE RGNL (GUC)

AMDT 7A 13010 (FAA)

TAKEOFF MINIMUMS: **Rwy 6**, std. w/ min. climb of 500' per NM to 9500, or 2000-3 for climb in visual conditions. **Rwy 24**, std. w/ min. climb of 420' per NM to 9300, or 2000-3 for climb in visual conditions. **Rwys 17,35**, NA - Obstacles.

DEPARTURE PROCEDURE: **Rwy 6**, climb heading 077° to 9500 then climbing right turn direct HBU VOR/DME, thence... or, for climb in visual conditions, cross Gunnison-Crested Butte RGNL Airport at or above 9500, then on HBU R-031 to HBU VOR/DME, thence...

Rwy 24, climb heading 242° to 9300 then climbing left turn direct HBU VOR/DME, thence... or, for climb in visual conditions, cross Gunnison-Crested Butte RGNL Airport at or above 9500, then on HBU R-031 to HBU VOR/DME, thence... climb in HBU VOR/DME holding pattern (hold SW, left turns, 031° inbound) to depart HBU VOR/DME at or above MEA for route of flight.

NOTE: **Rwy 6**, vehicles on road 22' from DER, 426' right of centerline, up to 15' AGL/7702' MSL. Obstruction light on DME antenna 555' from DER, 125' right of centerline, 10' AGL/7800' MSL. Trees beginning 669' from DER, left and right of runway centerline up to 60' AGL/7736' MSL. Rising terrain beneath the initial departure course beginning 1.0 NM from DER at 7864' MSL extending to 3.2 NM from DER up to 8473' MSL. Pole 1.0 NM from DER, 1950' left of centerline, 31' AGL/7950' MSL. Trees beginning 1.8 NM from DER, 1625' left of centerline, up to 100' AGL/ 8179' MSL. Trees 3.3 NM from DER, 3000' left of centerline, up to 100' AGL/ 8939' MSL. **Rwy 24**, trees beginning 501' from DER, 497' right of centerline, up to 60' AGL/7726' MSL. Trees beginning 1043' from DER, 320' left of centerline, up to 50' AGL/ 7713' MSL. Building 2666' from DER, 704' right of centerline, 52' AGL/7737' MSL. Pole 3069' from DER, 902' right of centerline, 30' AGL/ 7739' MSL. Trees beginning 4680' from DER, 1548' right of centerline, up to 100' AGL/7879' MSL.

HAYDEN, CO

YAMPA VALLEY (HDN)

AMDT 3 09183 (FAA)

TAKEOFF MINIMUMS: **Rwy 10**, std. w/ min. climb of 400' per NM to 12200, or 3200-3 for climb in visual conditions. **Rwy 28**, std. w/ min. climb of 245' per NM to 9500, or 3200-3 for climb in visual conditions.

DEPARTURE PROCEDURE: **Rwy 10**, climb on heading 147° to 12200 before proceeding on course. **Rwy 28**, climb on heading 238° to 9500 before proceeding on course. **Rwys 10, 28**, for climb in visual conditions: cross Yampa Valley airport at or above 9700 before proceeding on course.

NOTE: **Rwy 10**, tree 241' from DER, 420' right of centerline, 100' AGL/6699' MSL. Tree 644' from DER, 340' left of centerline, 100' AGL/6699' MSL. Multiple transmission towers, beginning 3606' from DER, left to right of centerline, up to 145' AGL/6745' MSL. Terrain beginning 1714' from DER, 707' right of centerline, up to 6676' MSL.

HOBBS, NM

LEA COUNTY RGNL (HOB)

ORIG-A 12292 (FAA)

NOTE: **Rwy 3**, multiple trees beginning 546' from DER, 811' right of centerline, up to 40' AGL/3700' MSL. Sign 822' from DER, 694' left of centerline, 38' AGL/3676' MSL. **Rwy 12**, road at DER, 112' right of centerline, 15' AGL/3654' MSL. **Rwy 17**, obstruction light on glideslope, 1014' from DER, 486' right of centerline, 37' AGL/3687' MSL. **Rwy 21**, tree 1304' from DER, 726' right of centerline, 46' AGL/3690' MSL. **Rwy 30**, wind sock 103' from DER, 280' left of centerline, 16' AGL/3675' MSL, pole 1035' from DER, 540' right of centerline, 25' AGL/3689' MSL. **Rwy 35**, multiple fences, roads and poles beginning 103' from DER, across centerline, up to 37' AGL/3696' MSL, pole 299' from DER, 493' left of centerline, 25' AGL/ 3689' MSL, pole 293' from DER, 94' right of centerline, 25' AGL/3682' MSL.

HOLLOMAN AFB (KHMM)

ALAMOGORDO, NM Amdt 1, 13234

Rwy 4, NA

Rwy 7, NA

Rwy 16, 8000-3*

Rwy 22, 8000-3**

Rwy 25, 8000-3*

Rwy 34, 8000-3***

* Or standard with minimum climb of 510/NM to 14,100.

** Or standard with minimum climb of 470/NM to 14,100.

*** Or standard with minimum climb of 490/NM to 14,100.

Rwys 16, 22, 25, 34, RADAR REQUIRED (when R-5103C not under Holloman Approach or Cherokee Control).

TAKE-OFF OBSTACLES: **Rwy 16**, Terrain 4052' MSL, 8' from DER, 320' left of centerline. Terrain 4052' MSL, 0' from DER, 500' left of centerline. Building 10' AGL/4059' MSL, 62' from DER, 270' right of centerline. Building 10' AGL/4060' MSL, 57' from DER, 270' left of centerline. Building 9' AGL/4059' MSL, 124' from DER, 90' left of centerline. **Rwy 22**, Terrain 4058' MSL, 0' from DER, 500' left of centerline. Terrain 4058' MSL, 0' from DER, 63' left of centerline. Terrain 4058' MSL, 49' from DER, 391' right of centerline. Terrain 4058' MSL, 0' from DER, 353' right of centerline. Terrain 4059' MSL, 0' from DER, 500' right of centerline. **Rwy 25**, Terrain 4054' MSL, 0' from DER, 500' left of centerline. Terrain 4055' MSL, 0' from DER, 434' left of centerline. Terrain 4055' MSL, 0' from DER, 161' right of centerline. Terrain 4055' MSL, 113' from DER, 491' right of centerline. Terrain 4055' MSL, 0' from DER, 500' right of centerline. Terrain 4055' MSL, 63' from DER, 517' right of centerline. **Rwy 34**, Terrain 4085' MSL, 0' from DER, 419' right of centerline. Terrain 4085' MSL, 16' from DER, 405' right of centerline. Terrain 4085' MSL, 0' from DER, 500' right of centerline. Terrain 4085' MSL, 22' from DER, 501' right of centerline.

HOLYOKE, CO

HOLYOKE (HEQ)

AMDT 1 11349 (FAA)

TAKEOFF MINIMUMS: **Rwy 32**, 300-1 or std. w/min. climb of 280' per NM to 4000.

NOTE: **Rwy 14**, trees 2011' from DER, 29' left of centerline, 100' AGL/3829' MSL. **Rwy 32**, trees 1009' from DER, 697' left of centerline, 100' AGL/3839' MSL. Tower 4448' from DER, 1036' left of centerline, 165' AGL/3886' MSL.

09 JAN 2014 to 06 FEB 2014

09 JAN 2014 to 06 FEB 2014

13346



TAKEOFF MINIMUMS AND (OBSTACLE) DEPARTURE PROCEDURES



**KREMMLING, CO**

MC ELROY AIRFIELD (20V)

TAKEOFF MINIMUMS: **Rwy 9**, 2600-2 or std. with a min. climb of 370' per NM to 12700. **Rwy 27**, 3200-2 or std. with a min. climb of 500' per NM to 12700.DEPARTURE PROCEDURE: **Rwy 9**, climb runway heading to 10000, then climbing right turn. **Rwy 27**, climb runway heading to 10900, then climbing left turn. **All aircraft** proceed direct RLG VOR/DME. Continue climb to 13,000 in RLG holding pattern (hold SW, left turns, 051° inbound).**LA JUNTA, CO**

LA JUNTA MUNI (LHX)

AMDT 3 03191 (FAA)

DEPARTURE PROCEDURE: **Rwy 8**, climb via heading 080°. **Rwy 12**, climb via heading 120°. **Rwy 26**, turn left heading 160°. **Rwy 30**, turn left heading 140°. **All aircraft**, intercept LAA R-238 (V210) to LAA VOR/DME. When at or above 8000 proceed on course.**LAMAR, CO**

LAMAR MUNI (LAA)

DEPARTURE PROCEDURE: **Rwys 8,36**, turn left. **Rwy 18**, turn left/right. **Rwy 26**, turn right. Direct LAA VOR/DME. Aircraft departing LAA R-048 CW R-118 climb on course. All others continue climbing in LAA holding pattern (N, right turns, 169° inbound) to 6000 before proceeding on course.**LAS CRUCES, NM**

LAS CRUCES INTL (LRU)

AMDT 1 96340 (FAA)

DEPARTURE PROCEDURE: **Rwys 4, 8**, climbing right turn. **Rwy 12**, CAT A,B, climb runway heading CAT C,D, NA. **Rwys 22, 26**, climbing left turn. **Rwy 30**, climbing runway heading to 5100 then climbing left turn.**All aircraft** climb direct HAWKE LOM. Continue climb in HAWKE holding pattern (SE, left turns, 304° inbound) to cross HAWKE LOM at or above 10000 before proceeding on course.**LAS VEGAS, NM**

LAS VEGAS MUNI (LVS)

AMDT 1 06103 (FAA)

DEPARTURE PROCEDURE: **Rwys 2, 14** turn left/right. **Rwy 20**, turn left (except via FTI R-215). **Rwy 32**, turn right.

Departures via FTI VORTAC R-001 CW R-215 climb on course. Departures via FTI VORTAC R-216 CW R-360 proceed direct FTI VORTAC. Climb in FTI VORTAC holding pattern (hold north, left turn, 192° inbound) to cross FTI at airway MEA/MCA. (NOTE: climb in hold not authorized for turbojet aircraft).

LEADVILLE, CO

LAKE COUNTY (LXV)

AMDT 2 08101 (FAA)

DEPARTURE PROCEDURE: **Rwy 16**, use LOZUL (RNAV) DEPARTURE. **Rwy 34**, use DAVVV (RNAV) DEPARTURE.**LONGMONT, CO**

VANCE BRAND (LMO)

AMDT 1 12040 (FAA)

DEPARTURE PROCEDURE: **Rwy 11**, climbing left turn to intercept GLL VOR/DME R-221 to 7000 ... **Rwy 29**, climbing right turn to intercept GLL VOR/DME R-221 to 7000 ...

... All aircraft proceed on GLL R-221 to GLL VOR/DME. Cross GLL VOR/DME at or above MEA/MCA for route of flight.

NOTE: **Rwy 11**, trees beginning 130' from DER, 191' right of centerline, up to 80' AGL/5119' MSL. Vehicles on roadway, 449' from DER, 395' left and right of centerline, 17' AGL/5046' MSL. Trees beginning 1383' from DER, 434' left of centerline, up to 80' AGL/5109' MSL. **Rwy 29**, trees beginning 4105' from DER, 220' left of centerline, up to 80' AGL/5189' MSL.**LOS ALAMOS, NM**

LOS ALAMOS (LAM)

AMDT 1 12152 (FAA)

TAKEOFF MINIMUMS: **Rwy 27**, NA-obstacles and airport restriction.DEPARTURE PROCEDURE: **Rwy 9**, climb heading 092° to intercept SAF R-354. Northbound climbing to 11000 on V83. Southbound climbing to 9000 on V83.NOTE: **Rwy 9**, terrain and trees beginning 101' from DER, 178' left and right of centerline, up to 60' AGL/7139' MSL.**LOVINGTON, NM**

LEA COUNTY-ZIP FRANKLIN MEMORIAL (E06)

AMDT 1 99364 (FAA)

DEPARTURE PROCEDURE: **Rwy 3**, climb runway heading to 4700 before turning on course.NOTE: **Rwy 12**, 35' AGL power line 1250' from DER 150' right of centerline. **Rwy 21**, 40' AGL tower 936' from DER 273' right of centerline. **Rwy 30**, 50' AGL windmill 1800' from DER 50' right of centerline.**MEEKER, CO**

MEEKER (EEO)

AMDT 1 08157 (FAA)

TAKEOFF MINIMUMS: **Rwys 3, 21**, 4100-3 for climb in visual conditions.DEPARTURE PROCEDURE: **Rwys 3, 21**, for climb in visual conditions: cross Meeker Airport at or above 10500 before proceeding on course.NOTE: **Rwy 21**, multiple trees beginning 843' from DER, 20' left of centerline, up to 100' AGL/7190' MSL. Multiple trees beginning 227' from DER, 187' right of centerline, up to 100' AGL/6862' MSL.**MONTE VISTA, CO**

MONTE VISTA MUNI (MVI)

AMDT 3 01025 (FAA)

DEPARTURE PROCEDURE: **Rwy 2**, climbing right turn. **Rwy 20**, climbing left turn. **All aircraft**, climb direct ALS VORTAC, continue climb in ALS holding pattern (SE, right turns, 301° inbound) to cross ALS VORTAC at or above 11000, except V210 westbound 11200 and J102 northeast bound 13700, before proceeding enroute.



TAKEOFF MINIMUMS AND (OBSTACLE) DEPARTURE PROCEDURES



13346

MONTROSE, CO

MONTROSE RGNL (MTJ)

AMDT 4 09127 (FAA)

DEPARTURE PROCEDURE: Use MONTROSE DEPARTURE.

NUCLA, CO

HOPKINS FIELD (AIB)

ORIG 07130 (FAA)

TAKEOFF MINIMUMS: **Rwys 11, 29**, NA-environmental DEPARTURE PROCEDURE: **Rwys 5, 23**, use NUCLA (RNAV) DEPARTURE.**PAGOSA SPRINGS, CO**

STEVENS FIELD (PSO)

ORIG 08045 (FAA)

TAKEOFF MINIMUMS: **Rwy 1**, std. w/ min. climb of 437' per NM to 9600, or 1900-3 for climb in visual conditions. **Rwy 19**, std. w/ min. climb of 296' per NM to 9300, or 1900-3 for climb in visual conditions.DEPARTURE PROCEDURE: **Rwy 1**, climbing right turn via heading 216° to intercept DRO VOR/DME R-066 to DRO VOR/DME for climb in visual conditions cross Stevens Field airport south bound at or above 9400 MSL, then via DRO VOR/DME R-066 to DRO VOR/DME**Rwy 19**, climb via heading 194° to intercept DRO VOR/DME R-075 to DRO VOR/DME for climb in visual conditions cross Stevens Field airport south bound at or above 9400 MSL, then via DRO VOR/DME R-066 to DRO VOR/DME

... thence cross DRO VOR/DME at MEA/MCA for direction of flight before proceeding on course.

NOTE: **Rwy 1**, terrain beginning 30' from DER, 53' left of centerline, up to 7697' MSL. Terrain beginning 127' from DER, 69' right of centerline, up to 7681' MSL. Multiple trees beginning 940' from DER, left and right of centerline, up to 100' AGL/7739' MSL. **Rwy 19**, multiple trees beginning 664' from DER, 156' left of centerline, up to 100' AGL/7693' MSL. Multiple trees beginning 1625' from DER, 5' right of centerline, up to 100' AGL/7698' MSL.**PORTALES, NM**

PORTALES MUNI (PRZ)

ORIG 12152 (FAA)

NOTE: **Rwy 8**, train on tracks, 624' from DER, left and right of centerline, up to 23' AGL/4087' MSL. Terrain beginning 35' from DER, left and right of centerline, 4064' MSL. Vehicles on road, 794' from DER, left and right of centerline, up to 17' AGL/4081' MSL. **Rwy 19**, terrain beginning 13' from DER, left and right of centerline, 4080' MSL. **Rwy 26**, terrain beginning 15' from DER, left and right of centerline, 4074' MSL.**PUEBLO, CO**

PUEBLO MEMORIAL (PUB)

AMDT 6 13178 (FAA)

TAKEOFF MINIMUMS: **Rwys 8L, 26R**, NA, environmental. **Rwy 35**, 400-2¼ or std. w/min. climb of 343' per NM to 5200.DEPARTURE PROCEDURE: **Rwy 8R**, climb heading 080° to 5500, then climbing left turn to intercept PUB R-040 to PUB VORTAC, thence ...**Rwy 17**, climb heading 170° to 5800, then climbing left turn on heading 050° and PUB R-180 to PUB VORTAC, thence ...**Rwy 26L**, climb heading 260° to 5700, then climbing left turn on heading 070° and PUB R-220 to PUB VORTAC, thence ...**Rwy 35**, climb heading 350° to 5200, then climbing right turn on heading 150° and PUB R-360 to PUB VORTAC, thence ...

... Continue climb in PUB VORTAC holding pattern (hold NE, right turns, 244° inbound) to cross PUB VORTAC at or above MEA for route of flight.

NOTE: **Rwy 8R**, rising terrain 378' from DER, 594' left of centerline, up to 4659' MSL. **Rwy 17**, pole 666' from DER, 661' right of centerline, 46' AGL/4676' MSL. **Rwy 26L**, rising terrain 25' from DER, 447' right of centerline, up to 4679' MSL. **Rwy 35**, rising terrain 178' from DER, left and right of centerline, up to 60' AGL/5069' MSL. Bushes beginning 23' from DER, right and left of centerline, up to 13' AGL/4750' MSL. Transmission line towers beginning 1.1 NM from DER, left and right of centerline, up to 57' AGL/4950' MSL. Radar reflector 995' from DER, on centerline, 4' AGL/4757' MSL.**RATON, NM**

RATON MUNI/CREWS FIELD (RTN)

AMDT 1 11097 (FAA)

TAKEOFF MINIMUMS: **Rwy 2**, std. w/ min. climb of 251' per NM to 9600 or 2100-3 for climb in visual conditions.**Rwy 7**, std. w/ min. climb of 367' per NM to 9300 or 2100-3 for climb in visual conditions.DEPARTURE PROCEDURE: **Rwy 2**, climbing right turn heading 090° and CIM VORTAC R-040 Northeast bound to airway MEA, then on course to assigned altitude, or for climb in visual conditions, cross Raton Muni/Crews Field at or above 8400 before proceeding on course. **Rwy 7**, for climb in visual conditions, cross Raton Muni/Crews Field at or above 8400 before proceeding on course.**Rwy 20**, climb on CIM VORTAC R-040 Southwest bound to airway MEA, if not at MEA by CIM VORTAC, turn south on V263-611 until reaching MEA, then on course to assigned altitude. **Rwy 25**, climbing left turn heading 227° and CIM VORTAC R-040 Southwest bound to airway MEA, if not at MEA by CIM VORTAC, turn South on V263-611 until reaching MEA, then on course to assigned altitude.

09 JAN 2014 to 06 FEB 2014

09 JAN 2014 to 06 FEB 2014

13346



TAKEOFF MINIMUMS AND (OBSTACLE) DEPARTURE PROCEDURES





TAKEOFF MINIMUMS AND (OBSTACLE) DEPARTURE PROCEDURES

13346

RIFLE, CO

GARFIELD COUNTY RGNL (RIL)

AMDT 10 12320 (FAA)

TAKEOFF MINIMUMS: **Rwy 8**, std. w/ min. climb of 400' per NM to 11900 or 5400-3 for climb in visual conditions.

DEPARTURE PROCEDURE: **Rwy 8**, DME required. Climb on RIL VOR/DME R-083 to ZOBAK/7.4 DME, then climbing left turn direct RIL VOR/DME. Climb in RIL VOR/DME holding pattern (hold East, right turns, 263° inbound) to cross RIL VOR/DME at or above MEA/MCA before proceeding enroute, or for climb in visual conditions cross Garfield County RGNL airport at or above 10800 before proceeding on course.

When executing VCOA, notify ATC prior to departure.

Rwy 26, use SQUAT (RNAV) DEPARTURE.

NOTE: **Rwy 8**, terrain beginning 155' from DER, 380' right of centerline, up to 5551' MSL. Pole 4049' from DER, 1379' right of centerline, 42' AGL/5642' MSL. Obstruction light on NDB tower 41' from DER, 300' left of centerline, 46' AGL/5586' MSL.

ROSWELL, NM

ROSWELL INTL AIR CENTER (ROW)

ORIG-A 11069 (FAA)

TAKEOFF MINIMUMS: **Rwys 12, 30**, NA. Runway closed.

DEPARTURE PROCEDURE: **Rwy 35**, climbing left turn to 6000 via heading 277° to intercept CME R-323, upon reaching 6000 proceed on course.

RUIDOSO, NM

SIERRA BLANCA RGNL (SRR)

ORIG 89124 (FAA)

TAKEOFF MINIMUMS: **Rwys 6,24**, 5200-3 or std. with a min. climb of 420' per NM to 12100'.

DEPARTURE PROCEDURE: **Rwy 6**, climb at 385' per NM to 9100' direct CEP NDB, continue climb in holding pattern (*hold E, left turns, 273° inbound) to cross CEP NDB at or above the MEA for direction of flight. *Do not exceed 230 kts in holding pattern. **Rwy 24**, immediate climbing left turn to 9100' direct CEP NDB, continue climb in holding pattern (*hold E, left turns, 273° inbound) to cross CEP NDB at or above the MEA for direction of flight. *Do not exceed 230 kts in holding pattern.

SALIDA, CO

HARRIET ALEXANDER FIELD (ANK)

ORIG 08101 (FAA)

TAKEOFF MINIMUMS: **Rwys 6, 24**, 6800-3 for climb in visual conditions.

DEPARTURE PROCEDURE: **Rwys 6, 24**, For climb in visual conditions: Cross Harriet Alexander Field at or above 14200 MSL before proceeding on course.

NOTE: **Rwy 24**, Multiple transmission towers beginning 666' from DER, 440' right of centerline, up to 73' AGL/7651' MSL. Multiple trees beginning 5455' from DER, 663' right of centerline, up to 100' AGL/7908' MSL.

SANTA FE, NM

SANTA FE MUNI (SAF)

AMDT 3 93231 (FAA)

TAKEOFF MINIMUMS: **Rwy 28**, 1000-3 or std. with a min. climb of 240' per NM until passing 7300 MSL. **Rwys 2, 33**, Cats. C and D, 2900-3 or std. with a min. climb of 330' per NM until 9000 MSL.

DEPARTURE PROCEDURE: **Rwys 2, 10, 33**, turn right; **Rwys 20, 28**, turn left; **Rwy 15**, climb runway heading. **All aircraft** climb direct to SAF VORTAC. Continue climbing in SAF VORTAC holding pattern (hold SE, right turns, 332° inbound) to cross SAF VORTAC at or above airway MEA/MCA for direction of flight.

SANTA TERESA, NM

DONA ANA COUNTY AT SANTA TERESA (5T6)

ORIG 05300 (FAA)

TAKEOFF MINIMUMS: **Rwy 10**, std. with a min. climb of 419' per NM to 8400, or 2800-3 for climb in visual conditions. **Rwy 28**, std. with a min. climb of 358' per NM to 8400, or 2800-3 for climb in visual conditions.

DEPARTURE PROCEDURE: **Rwys 10, 28**, for climb in visual conditions: cross Dona Ana County at Santa Teresa Airport at or above 6800 before proceeding on course.

SILVER CITY, NM

GRANT COUNTY (SVC)

AMDT 1 04246 (FAA)

TAKEOFF MINIMUMS: **Rwys 3,8,12,17,21,26,30,35**, std. with a min. climb of 354' per NM to 9200, or 3800-3 for climb in visual conditions.

DEPARTURE PROCEDURE: **Rwys 3,8,12,17,21,26,30, 35**, for climb in visual conditions: cross Grant County Airport at or above 9200.

NOTE: **Rwy 3**, crane 5007' from DER, 1056' right of centerline, 200' AGL/5610' MSL. **Rwy 8**, pole 1.12 NM from DER, 381' right of centerline, 30' AGL/5383' MSL. Power line 2.18 NM from DER, 139' right of centerline, 200' AGL/5520' MSL. **Rwy 12**, pole 5265' from DER, 490' right of centerline, 72' AGL/5417' MSL. **Rwy 17**, pole 1.02 NM from DER, 469' left of centerline, 50' AGL/5408' MSL. **Rwy 21**, multiple bushes beginning from 4556' from DER, 79' right of centerline, up to 40' AGL/5403' MSL.

SOCORRO, NM

SOCORRO MUNI (ONM)

AMDT 3 09239 (FAA)

TAKEOFF MINIMUMS: **Rwys 6,15,24**, NA-terrain.

Rwy 33, 200-1¼ or std. w/ min. climb of 216' per NM to 5100, or alternatively, with standard TAKEOFF minimums and a normal 200'/NM climb gradient, TAKEOFF must occur no later than 1500' prior to DER.

DEPARTURE PROCEDURE: **Rwy 33**, climbing right turn via heading 030° and ONM VORTAC R-179 to ONM VORTAC, continue climb-in-hold (hold North, right turns, 182° inbound) to cross ONM VORTAC at or above MEA/MCA for direction of flight.

NOTE: **Rwy 33**, trees beginning 67' from DER, 66' left of centerline, up to 15' AGL/4814' MSL. Trees beginning 436' from DER, 438' right of centerline, up to 15' AGL/4814' MSL. Tower 4996' from DER, 1161' left of centerline, 147' AGL/4947' MSL. Tower 5851' from DER, 584' right of centerline, 200' AGL/4956' MSL.

09 JAN 2014 to 06 FEB 2014

09 JAN 2014 to 06 FEB 2014

13346



TAKEOFF MINIMUMS AND (OBSTACLE) DEPARTURE PROCEDURES





TAKEOFF MINIMUMS AND (OBSTACLE) DEPARTURE PROCEDURES

13346

SPRINGFIELD, CO

SPRINGFIELD MUNI (8V7)

ORIG 07354 (FAA)

TAKEOFF MINIMUMS: **Rwy 17**, 4900-3 or std. w/ a min. climb of 225' per NM to 5000.NOTE: **Rwy 17**, tower 15212' from DER, 2936' right of centerline, 425' AGL/4817' MSL.

STEAMBOAT SPRINGS, CO

STEAMBOAT SPRINGS/BOB ADAMS FIELD (SBS)

TAKEOFF MINIMUMS: **Rwy 14**, 1500-3 or std. with a min. climb of 610' per NM to 9000. **Rwy 32**, 1900-3 or std. with a min. climb of 500' per NM to 9000.DEPARTURE PROCEDURE: **Rwy 14**, turn right heading 220°, intercept BQZ R-172. **Rwy 32**, turn left direct BQZ VOR/DME. All aircraft climb to 12100 via BQZ R-172 to SBURG Int. and hold (S, right turns, 352° inbound).

STERLING, CO

STERLING MUNI (STK)

AMDT 1 12264 (FAA)

TAKEOFF MINIMUMS: **Rwys 4, 22**, NA-Environmental.NOTE: **Rwy 15**, pole 548' from DER, 441' right of centerline, 30' AGL/4040' MSL. **Rwy 33**, multiple buildings, signs beginning 10' from DER, left and right of centerline, up to 16' AGL/4065' MSL. Wall 192' from DER, 511' left of centerline, 6' AGL/4052' MSL. Multiple trees beginning 573' from DER, 339' left of centerline, up to 41' AGL/4090' MSL.

TAOS, NM

TAOS RGNL (SKX)

AMDT 1 13010 (FAA)

DEPARTURE PROCEDURE: **Rwy 4**, climbing left turn to intercept TAS VORTAC R-100 to TAS VORTAC. Do not exceed 240 KIAS until TAS VORTAC, thence ...**Rwy 22**, climbing right turn to intercept TAS VORTAC R-100 to TAS VORTAC, thence ...

Climb in TAS VORTAC holding pattern (hold NW, right turns, 116° inbound) to 12500 before proceeding enroute.

NOTE: **Rwy 4**, trees beginning 969' from DER, 307' left of centerline, up to 29' AGL/7134' MSL. Building 913' from DER, 417' left of centerline, 22' AGL/7121' MSL.

TELLURIDE, CO

TELLURIDE RGNL (TEX)

AMDT 2 11181 (FAA)

TAKEOFF MINIMUMS: **Rwy 9**, NA-obstacles.**Rwy 27**, std. w/ min. climb of 463' per NM to 10500, or 5400-3 for climb in visual conditions.DEPARTURE PROCEDURE: **Rwy 27**, climb to 12000 via heading 273° to intercept the ETL R-096 to ETL VOR/DME, or for climb in visual conditions: cross Telluride Airport westbound at or above 14300 via ETL R-095 to ETL VOR/DME. Note: All aircraft cross ETL VOR/DME at or above airway MEA/MCA for direction of flight.NOTE: **Rwy 27**, trees beginning 32' from DER 421' left of centerline, up to 100' AGL/9381' MSL. Trees beginning 173' from DER, 46' right of centerline, up to 100' AGL/9094' MSL. Light support structure 8' from DER, 60' left and right of centerline, up to 4' AGL/9039' MSL. Terrain beginning at DER, left and right of centerline, up to 9075' MSL.

TRINIDAD, CO

PERRY STOKES (TAD)

AMDT 4 13346 (FAA)

TAKEOFF MINIMUMS: **Rwys 9,27**, NA - ATC.DEPARTURE PROCEDURE: **Rwy 3**, climbing left turn direct TAD NDB, thence... **Rwy 21**, climbing right turn direct TAD NDB, thence...

... climb in holding pattern (hold N, left turns, 177° inbound) to appropriate MEA for route of flight.

NOTE: **Rwy 3**, multiple trees beginning 81' from DER, left and right of centerline, up to 15' AGL/5754' MSL. Multiple fence poles beginning 109' from DER, left and right of centerline, up to 10' AGL/5749' MSL. Vehicle on road beginning 298' from DER, left and right of centerline, 18' AGL/5757' MSL. **Rwy 21**, multiple trees beginning 200' from DER, left and right of centerline, up to 15' AGL/5764' MSL.

TRUTH OR CONSEQUENCES, NM

TRUTH OR CONSEQUENCES MUNI (TCS)

AMDT 1 87127 (FAA)

TAKEOFF MINIMUMS: 1500-3 or std. with a min. climb of 500' per NM to 8000.

DEPARTURE PROCEDURE: **Rwys 19,25,29,31**, turn right; **Rwys 1,7,11,13,15,33**, turn left, climb direct TCS VORTAC, continue climb in holding pattern (hold N, left turns, 180° inbound) to cross TCS VORTAC at above the MEA for direction of flight.

TUCUMCARI, NM

TUCUMCARI MUNI (TCC)

DEPARTURE PROCEDURE: All **Rwys** for SW-bound V-264 climb TCC R-255 within 10 NM to 5500 before departing on course. **Rwy 21**, climb heading 213° to 5500 before proceeding on course. **Rwy 26**, climb heading 258° to 5500 before proceeding on course.

WALDEN, CO

WALDEN-JACKSON COUNTY (33V)

ORIG 08157 (FAA)

TAKEOFF MINIMUMS: **Rwys 17, 35**, NA-ATC.DEPARTURE PROCEDURE: **Rwys 4, 22**, Use WALRU RNAV DEPARTURE.

WALSENBURG, CO

SPANISH PEAKS AIRFIELD (4V1)

ORIG 13066 (FAA)

DEPARTURE PROCEDURE: Use GOSIP RNAV DEPARTURE.

WRAY, CO

WRAY MUNI (2V5)

ORIG 03079 (FAA)

TAKEOFF MINIMUMS: **Rwy 17**, 500-2 or std. with a min. climb of 280' per NM to 4400.DEPARTURE PROCEDURE: **Rwy 17**, climbing right turn via AKO VOR/DME R-084 to 7000 before proceeding on course. **Rwy 35**, climbing left turn via AKO VOR/DME R-077 to 7000 before proceeding on course.NOTE: **Rwy 35**, trees 2175' left of DER, 100' AGL/3778' MSL.

ZUNI PUEBLO, NM

BLACK ROCK (ZUN)

ORIG 81204 (FAA)

TAKEOFF MINIMUMS: **Rwy 7**, 1200-2 or std. with a min. climb of 360 feet per NM to 7600.DEPARTURE PROCEDURE: **Rwy 7**, climbing left turn direct ZUN VORTAC. **Rwy 25**, climb direct ZUN VORTAC.

13346



TAKEOFF MINIMUMS AND (OBSTACLE) DEPARTURE PROCEDURES

